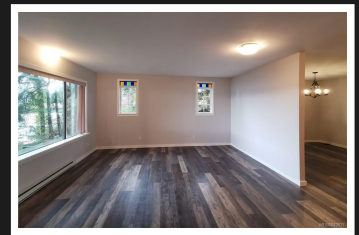
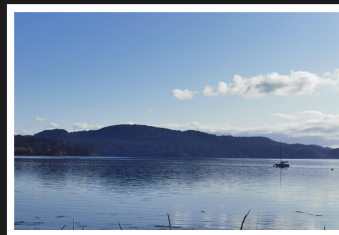
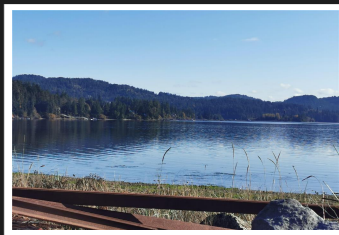


PEMBERTON  
HOLMES

· ESTABLISHED 1887 ·

# WEST COAST WATERFRONT PARADISE

## 2037 Kaltasin Rd



### 2037 Kaltasin Rd

A TRUE WEST COAST WATERFRONT PARADISE!! A very special Oceanfront location with awe inspiring views, walk on beach. Just under 2 acres of usable land, complete with a HUGE fenced garden & an abundance of fruit trees (old fashioned outdoor cold storage), and your very own forest! Great walk-in one level home, with a full height crawl space, featuring a spacious ocean view Living Room, large Dining Room and a very bright Kitchen w/eating bar. Tons of room in the lower level full height Crawl Space, with some updates you can make this wonderful home one that completely suites yourself! Wrap around driveway. Located on the Victoria side of Sooke, on Billings Spit, a short distance to Westshore, close to schools and transportation. A must see... Floor Plans available

**Priced at**  
**\$999,900**

Area	Billings Spit	Age	1949
Bedrooms	2	Taxes	4369
Bathrooms	2	Tax Year	2019
Lot Size	85813	MLS#	842831
Floor Space	1663	Parking	6 Spaces, RV



**MIKE WILLIAMS**

Pemberton Holmes - Sooke

Scan this QR  
Code with your  
smart phone



(250) 642-3240  
mikelw@shaw.ca  
www.mikesellsvictoria.com

2 - 6716 West Coast Rd  
Sooke, V9Z 0P7