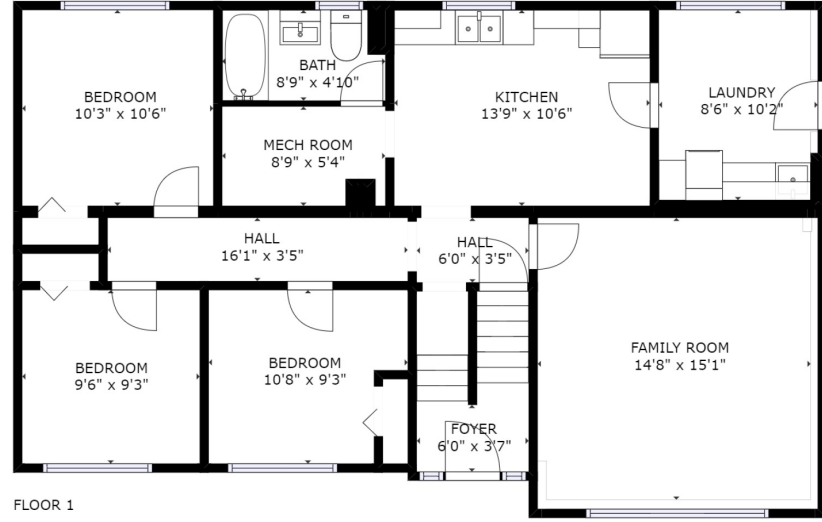
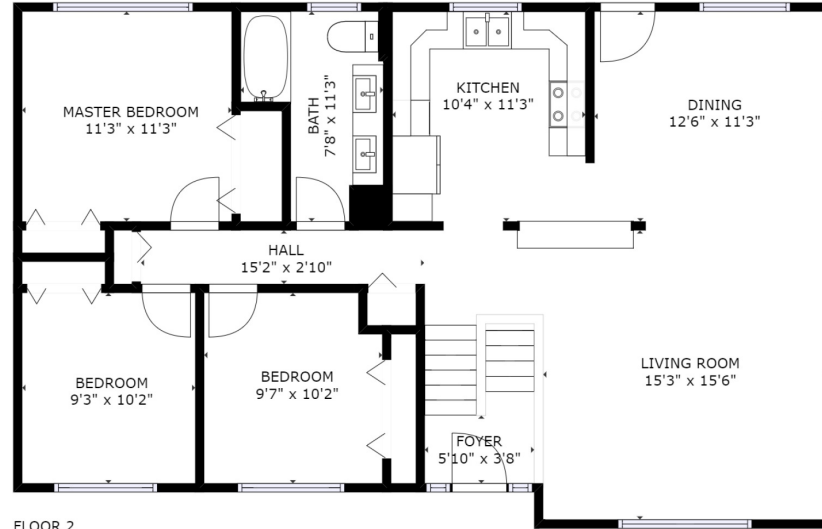


# 360 Watfield Ave



FLOOR 1



FLOOR 2



## 360 Watfield Ave

Extensively renovated 2450 sq ft, 6 bedroom, 2 bathroom split entry home in Nanaimo's transforming University District neighbourhood. Conveniently located, VIU is a 15-minute walk or an 8-minute bike ride, Old City is only a few minutes by bike or car, and University Mall is only a 5-minute drive. Even though it's close to amenities it's the last house on a no-thru street so it's private and quiet. The upstairs kitchen is gorgeous with solid cherry cabinets (including soft close doors and drawers), Travertine backsplash, granite countertops and LED under cabinet lighting. The appliances are incredible. They're professional level Electrolux ICON Series units including a 32" french door fridge, a dishwasher, microwave and an extremely impressive Electrolux Induction stove. (Boils water in just over a minute!). New fiberglass shingles in Sept 2016, updated vinyl windows, updated exterior doors, upgraded lower siding and a new, 300 sq. ft, 68 mil vinyl (professionally) coated deck with custom wood railings - it also doubles as a two-car carport. Situated on a bright 9000+ sq ft lot.



**KEVIN CARL**  
REALTOR®

C: 250.240.2745  
E: kevincarl@kevincarl.ca  
www.kevincarl.ca



www.canadianmediterranean.marketing

679 Memorial Avenue  
Qualicum Beach, BC  
V9K 1T4



**KEVIN CARL**  
REALTOR®

C: 250.240.2745  
E: kevincarl@kevincarl.ca  
www.kevincarl.ca

679 Memorial Avenue  
Qualicum Beach, BC  
V9K 1T4





For additional information and photos on this home, please visit: [kevincarl.ca](http://kevincarl.ca) or call 250.240.2745

#### SPECS

Area	Z4 University District
Bedrooms	6
Bathrooms	2
Lot Size	9000+ Sq Ft.
Floor Space	2,450 Sq Ft.
Age	Renovated
Taxes	\$2,513
Tax Year	2017

#### FEATURES

- High end kitchen and appliances
- Central location
- VIU, NDSS & Fairview all within walking distance
- Inlaw suite
- Move-in ready

431561 © 2017 VIREO