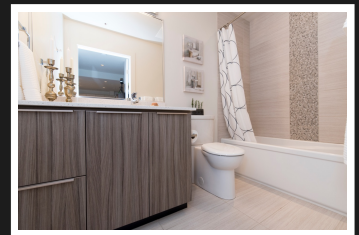
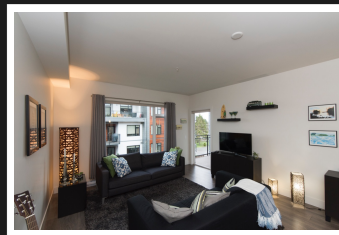


PEMBERTON
HOLMES

· ESTABLISHED 1887 ·

STUNNING LAKE VIEW CONDO

302-3815 Rowland Ave



1 BEDROOM, 1 BATHROOM

Welcome to this stunning large 1 bed 1 full bath condo, facing South West. Large windows allowing the south sun, sun, sun to shine in! This building, the award winning Uptown Place development boasts, Mt and lake views. Built by Tri-Eagle & Jawl Residential, this unit offers modern, high end finishes. This ideal floor plan offers in-suite laundry, ample closet space & a gorgeous open concept chef's kitchen. Luxurious master bed. Drive downtown in less than 10 mins & walk to restaurants, transit, groceries, shopping & all that Uptown has to offer. Unit comes with TWO SECURED UNDERGROUND PARKING STALLS. A storage locker, bike storage & offers 13 stalls for guest parking and ample street parking. PETS & RENTALS ALLOWED! One dog (no size restriction) & one cat or 2 cats. Don't miss out call today for Easy Viewing!

Priced at
\$430,000

Area	Glanford
Bedrooms	1
Bathrooms	1
Lot Size	0.01
Floor Space	638

Age	2015
Taxes	1501
Tax Year	2017
MLS#	387562
Parking	4 Spaces



KIM MCLACHLAN

Pemberton Holmes - Cloverdale

Scan this QR
Code with your
smart phone



(250) 384-8124
kim@kimandvicky.com
<http://www.kimandvicky.com>

150 - 805 Cloverdale Ave
Victoria, V8X 2S9