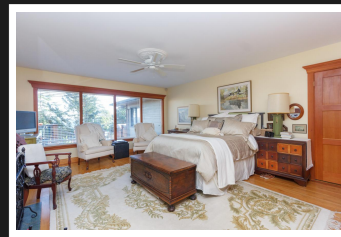
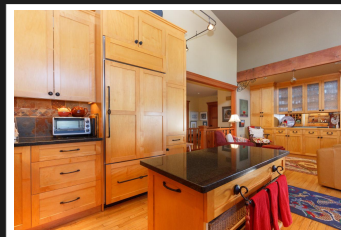


PEMBERTON
HOLMES

· ESTABLISHED 1887 ·

SPECTACULAR OCEAN VIEWS

2020 Pauls Terr



BEDROOMS 5, BATHROOMS 3

Spectacular ocean views are yours from most rooms in this beautiful family home and Close to Uvic. When you enter the front door you'll be impressed with the updated kitchen with granite counters and the great room with its extensive views and 16 ft. ceiling. Old growth fir reclaimed from Strawberry Vale School and wood floors lead to the multi-tiered decks with views across the straight to San Juan Island. The beautiful master bedroom on the main floor features a wood burning fireplace . There is a second wood burning fireplace in the rec. room and gas fireplace in the main living area along with a heat pump insuring this home stays cozy all year around. There are views from almost every room including the office as well as the lower level living area's or guest suite.

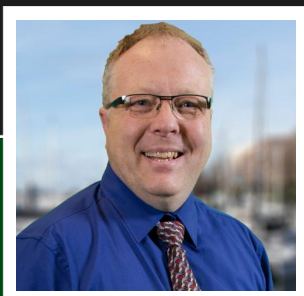
Priced at
\$1,999,000

Area
Bedrooms
Bathrooms
Lot Size
Floor Space

Gordon Head
5
3
0.33
3660

Age
Taxes
Tax Year
MLS#
Parking

1959
7046
2017
386300
Garage DBL



ROB DAVIES

Pemberton Holmes - Cloverdale

Scan this QR
Code with your
smart phone



(250) 384-8124
rob@robdavies.ca
www.robdavies.ca

150 - 805 Cloverdale Ave
Victoria, V8X 2S9