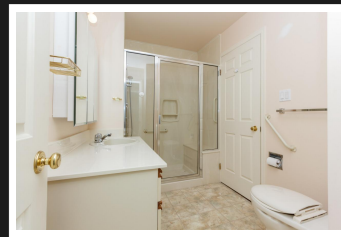


PEMBERTON  
HOLMES

· ESTABLISHED 1887 ·

# ONE LEVEL LIVING

2-3221 Wordsworth St



## BEDROOMS 2, BATHROOMS 1

One level living just steps to Hillside Shopping Center. Wheelchair friendly, Quiet location at the end of the cul-de-sac just a short walk to the Hillside Shopping Center, Camosun College, Cedar Hill Rec Center, Medical clinic, walking trails and the golf course. Level entry off the patio with a spacious open plan living room/dining room. Family room with a wood burning fireplace. The second bedroom has a convenient Murphy bed - perfect for quests. Laundry area with freezer. High, lit crawlspace - great for extra storage. Fully fenced, landscaped private garden/yard off the covered sundeck for outdoor living and entertaining. Adult oriented, pet friendly, wheelchair friendly, small complex(only 5 townhouse units ). Quiet, hidden location yet so close to everything you need! Immediate possession available.

**Priced at**  
**\$489,000**

Area	Camosun
Bedrooms	2
Bathrooms	1
Lot Size	0.03
Floor Space	1126

Age	1986
Taxes	2383
Tax Year	2018
MLS#	394637
Parking	1 Space



**BRENDA ELLIS**

Pemberton Holmes - Oak Bay

Scan this QR  
Code with your  
smart phone



(250) 590-8124  
brendaellis@live.ca  
www.brendaellis.ca

2000 Oak Bay Ave  
Victoria, V8R 1E4