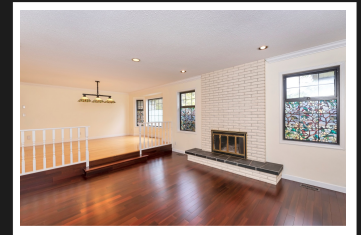
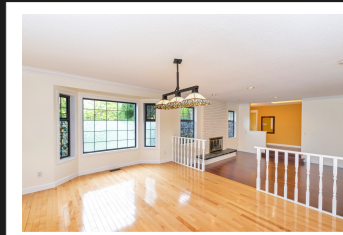


PEMBERTON
HOLMES

· ESTABLISHED 1887 ·

2323 Edgelow St



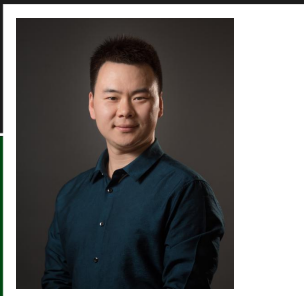
2323 Edgelow St

A wonderful bright rancher in Arbutus; hard to find 4 bedrooms & 3 baths on one level this lovely home is situated on a private quiet 14826 sq. ft. lot close to UVIC. this beautiful home has a sunken living room, dining room with maple hardwood floors. Updated kitchen, which overlooks the sunken family room, the deck and backyard. Very privacy back yard plus a separated veggie garden. A rare find in an excellent neighborhood, walk to all levels of schools and recreation.

Priced at
\$1,259,000

Area	Arbutus
Bedrooms	4
Bathrooms	3
Lot Size	0.34
Floor Space	2247

Age	1989
Taxes	5677
Tax Year	2018
MLS#	410810
Parking	4 Spaces, Covered Parking



RUSSELL XU ??

Pemberton Holmes - Cloverdale

Scan this QR
Code with your
smart phone



778-922-5678
russellxu21@gmail.com
Attached,
DRIVEWAY,
Garage
1500 Edgelow Ave
Victoria, V8X 2S9