

ARRAIJAN, VÍA CHAPALA, VÍA EL COPÉ, PANAMÁ

US\$537,000.00

9.15 acres farm land
FOR SALE

LAND INVESTMET

FOR SALE

9.15 acres

(3hectares
+
7,010.32
square
meters).

Land for horse farm and camping house compound with great location for entertainment and residential investment.

This property is near commercial Mall Centers and recreational family activities, just 35 minutes from Panama city.



interactive QR code.



ARRAIJÁN, VÍA CHAPALA, VÍA EL COPÉ, PANAMA

Excelent location at Arraijan, Chapala, near modern commercial Malls and entertainment with movies cinemas, shops, supermarkets and nice restaurants.

The property has good access to public services and roads highway, it takes 35 minutes to Panama city aproximately and ideal for fresh air of its rainforest areas, so to have farm with horses and planting fruits, vegetables and timber trees.

FIDEL SALOMÓN ULLOA D.

LICENCIA PN-0985

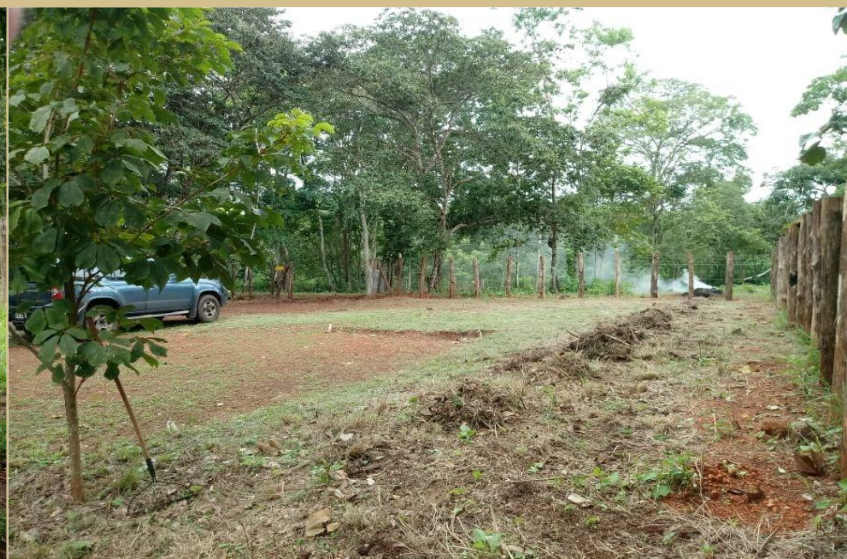
+(507) 6615-6044

Ancón, Albroom Gardens, Clayton drive #75

fsulloa@cwpanama.net

<https://panamahomeland.realtyHD.com>





ARRAIJÁN FARM LAND FOR ENTERTAINMENT AND INVESTMENTS.

The property location allows multiple purposes, besides horses farm land, also is subject of interest for developers of new constructions of residential community projects.

Property has 9.15 acres (3 hectares + 7,010.31 square meters).

FIDEL SALOMÓN ULLOA

LICENCIA PN-0985

+(507) 6615-6044

Ancón, Albrook Gardens, Clayton drive, #75

fsulloa@cwpanama.net

<https://panamahomeland.realtyHD.com>

