

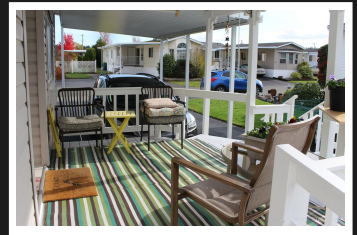
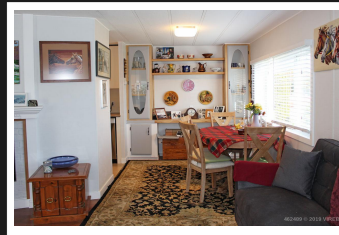
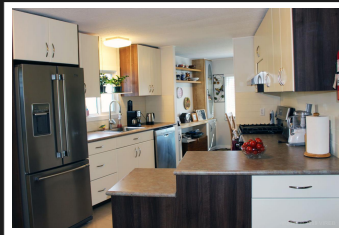
PEMBERTON
HOLMES

· ESTABLISHED 1887 ·

PRICE CHANGE

7 - 450 STANFORD E AVE

\$226,950



7-450 Stanford E Ave, Parksville

Parksville Value Package in desirable Shellybrook Estates, updated 3 bedroom double wide manufactured home on large corner Lot. Bright, open floor plan with brand new custom kitchen with soft close drawers, new stainless steel fridge, stove and dishwasher, large pantry area, brand new bathroom vanity & shower, maple hardwood flooring, newer hot water tank. There is also an attached covered porch just off the back door and walkdown to cute patio area. The home also has a good sized, attached workshop and one freestanding garden shed, raised garden beds, and newer metal roof. 1 small pet allowed. Short walk to shopping and to Sandy Parksville Beach. A Great Value in a Great Location!

Priced at
\$226,950

Area Z5 Parksville
Bedrooms 3
Floor Space 960

Age 1980
Taxes 918
Tax Year 2019
MLS# 462489



JOLENE AARBO

Pemberton Holmes - Parksville

Scan this QR
Code with your
smart phone



(250) 248-8801
joleneaarbo@gmail.com
www.parksville-realestate.ca

135 Alberni Hwy
Parksville, V9P 2G6