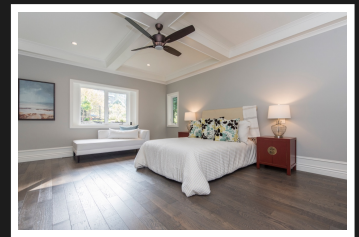
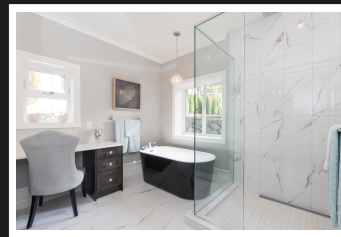
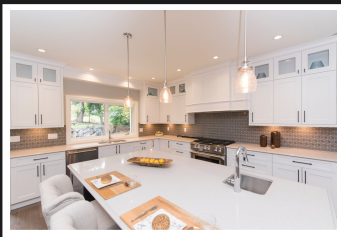


PEMBERTON
HOLMES

· ESTABLISHED 1887 ·

IMMACULATE NEW RANCHER

4041 Haro Rd

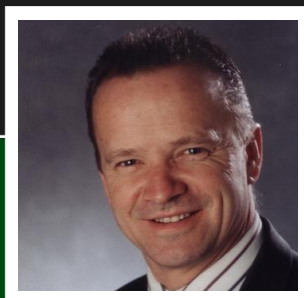


4 Bedroom, 4 Bathroom

This brand new gorgeous rancher with a full basement boasts a main floor of over 2300 sq ft of opulent living space & a very versatile open floor-plan. Overall this 2018 built, 4 bed, 4 bath, 3700 sq ft home rests on a nicely landscaped, slightly elevated 13000 sq ft very private, sun drenched lot, and located on a quiet cup de sac. Just a few of the features include a wonderful, bright, open foyer, hardwood floors, vaulted ceilings, stunning feature fireplace, gourmet country size kitchen c/w high end appliances, but wait till you see the master suite. It truly is a retreat that will wow your senses at over 600 sq ft of spa style finishing which is something you deserve after a long day. There are 2 more bedrooms & another bathroom to round out the main floor. Downstairs is a media room, wine cellar, another bathroom, then there is a 1 bedroom legal suite, or just utilize the extra space for whatever your personal needs may be. An absolute must see. 2/5/10 year warranty

Priced at
\$2,295,000

Area	Queenswood	Age	2018
Bedrooms	4	Taxes	4252
Bathrooms	4	Tax Year	2018
Lot Size	0.3	MLS#	404383
Floor Space	3664	Parking	Double Garage



DAVID SCOTNEY

Pemberton Holmes - Cloverdale

Scan this QR
Code with your
smart phone



(250) 384-8124
power@pembertonholmes.com
www.buyvictoriarealestate.com

150 - 805 Cloverdale Ave
Victoria, V8X 2S9