

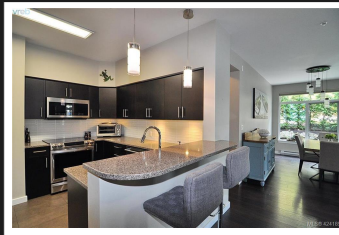
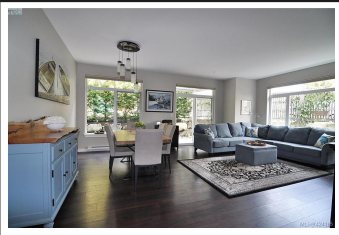
PEMBERTON
HOLMES

· ESTABLISHED 1887 ·



100 595 LATORIA ROAD

WestShore Living at its Finest!

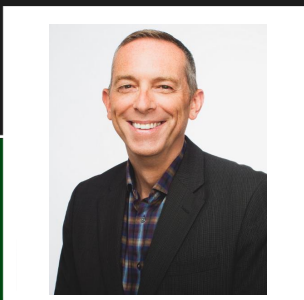


Beautiful & Bright Ground Floor Living with a single detached garage!

Heron's Landing is situated in a serene natural setting, walking distance to Olympic View Golf Course, Red Barn Market, Latoria Creek Park, and just a short drive to Royal Bay Beach Park. The developer spared no expense in design or finishing details to make this one of the best condos in the area. Boasting approximately 1300 square feet of bright open living space, this ground-level 2-bed, 2-bath corner unit has 2 parking stalls, and 1 of only 5 garages in the complex! Features include 9' ceilings, upgraded Hunter Douglas blinds, laminate flooring in the main living areas, and heated tile floors in the kitchen and bathrooms. There are high-end stainless-steel appliances, quartz countertops, eating bar, plenty of cupboard space, and a large pantry. The main bathroom has a soaker tub and linen closet. The master bedroom boasts a walkthrough closet complete with organizers, leading to a spacious ensuite with a large walk-in shower. Heron's Landing is a unique oasis in the West Shore!

Priced at
\$539,900.00

Area	Olympic View	Age	2015
Bedrooms	2	Taxes	2478
Bathrooms	2	Tax Year	2019
Floor Space	1295	MLS#	424185
		Parking	3 Spaces,



JAMES BROWN

Pemberton Holmes - Oak Bay

Scan this QR
Code with your
smart phone



(250) 590-8124
james@findhomevictoria.com
findhomevictoria.com

2000 Oak Bay Ave
Victoria, V8R 1E4