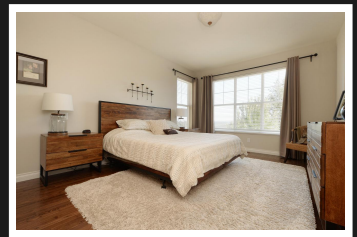
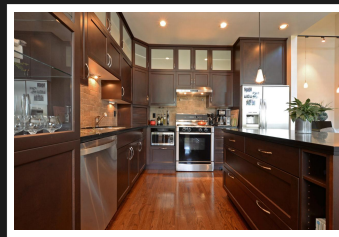
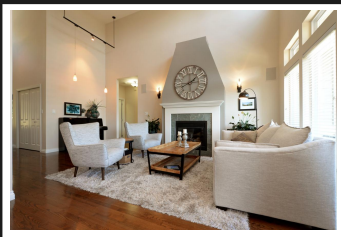


PEMBERTON
HOLMES

· ESTABLISHED 1887 ·

BEAR MOUNTAIN TOWNHOME

123-945 Bear Mountain

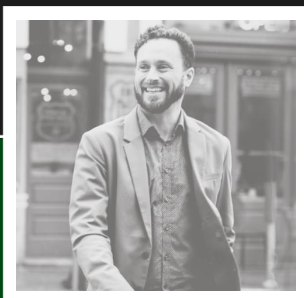


BEDROOMS 3, BATHROOMS 3

Incredible views towards Mt. Baker from this totally upgraded 3 bed, 3 bath executive townhome at Skyline Park in the Bear Mountain community. Great LEVEL ENTRY floorplan offering over 2000 sq.ft., 20 ft vaulted ceilings, master bedroom on the main floor, gorgeous upgraded hardwood floors throughout, exquisite kitchen with top-of-the-line appliances, Richlite countertops, beautiful cabinetry, full walkout lower level with family room, guest bedrooms & large deck! Versatile open floorplan " extremely bright and sunny. Forced air heating, double car garage, well maintained strata. Complex is surrounded on three sides by dedicated parkland. Custom designed for the current owners - pride of ownership throughout! Immediate possession possible.

Priced at
\$684,900

Area	Bear Mountain	Age	2004
Bedrooms	3	Taxes	2997
Bathrooms	3	Tax Year	2018
Lot Size	0.05	MLS#	398186
Floor Space	2168	Parking	2 Spaces



ZAMIAN PARSONS

Pemberton Holmes - Cloverdale

Scan this QR
Code with your
smart phone



(250) 384-8124
zamianparsons@gmail.com
<http://zamian.ca>

150 - 805 Cloverdale Ave
Victoria, V8X 2S9