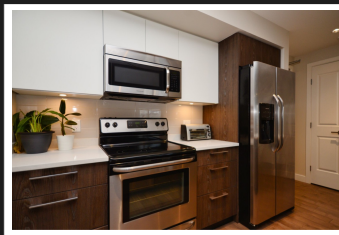
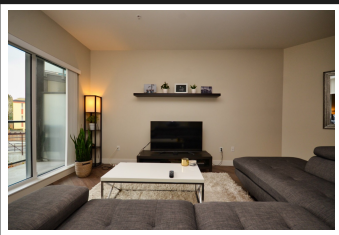


PEMBERTON
HOLMES

· ESTABLISHED 1887 ·

304-1000 INVERNESS RD



Welcome to this 823 sq.ft. 2017 built condo. Offering 1 bed, den and two bathrooms, this layout is sure to please. Open dining-living combo with ample space and a unique layout. Quartz countertops and beautiful cabinets are a chef's dream. The building was constructed to BUILT GREEN Gold Standard for healthier living. You will be close to all amenities, such as Uptown mall, Thrifty Foods and minutes to the downtown core, but quietly hidden away with Regent Park right outside your door. With secure under ground parking, storage locker and Building Warranty in place makes this a very desirable place to call home. Call your Real estate agent for a showing!!

Priced at
\$479,900

Area	Quadra	Age	2017
Bedrooms	1	Taxes	1767
Bathrooms	2	Tax Year	2018
Lot Size	0.02	MLS#	406833
Floor Space	823	Parking	Underground



HARRY FOWLER

Pemberton Holmes - Cloverdale

Scan this QR
Code with your
smart phone



(250) 384-8124
harryfowler56@gmail.com
www.harryfowler.com

150 - 805 Cloverdale Ave
Victoria, V8X 2S9