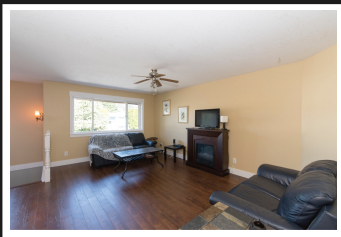


PEMBERTON  
HOLMES

· ESTABLISHED 1887 ·

# WONDERFUL FAMILY HOME

6155 Lane Rd



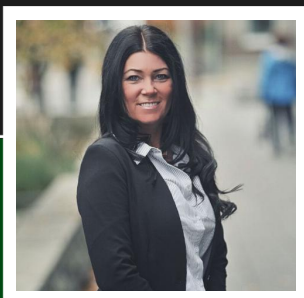
## 4 BEDROOMS, 2 BATHROOMS

ADDITIONAL ACCOMODATION! This home offers the flexibility of using the in-law suite as a 1 or 2 bed/den. 3 beds 1 bath up and 1 bed 1 bath + den down. HT pump - A/C, fully fenced rear yard, side patio area, garden area, ample parking and garage. Take in the lovely view of Mt Prevost across the road. Family friendly neighbourhood and the convenience of close-by elementary and French immersion schools. Walking and hiking trails, athletic parks, golf, amenities all within minutes. Drive to town and stroll the streets in Old Town Duncan, window shop the many eclectic storefronts that dot the roadway or dine at one of many eateries offered in town. A highly sought after neighbourhood with all that it offers, this home won't last long.

**Priced at**  
**\$358,800**

Area	Duncan
Bedrooms	4
Bathrooms	2
Lot Size	0.17
Floor Space	1865

Age	1998
Taxes	3028
Tax Year	2017
MLS#	378974
Parking	Garage Single



**CATHY CURTI**

Pemberton Holmes - Cloverdale

Scan this QR  
Code with your  
smart phone



(250) 384-8124  
ccurti71@gmail.com  
cathycurti.com

150 - 805 Cloverdale Ave  
Victoria, V8X 2S9