



---

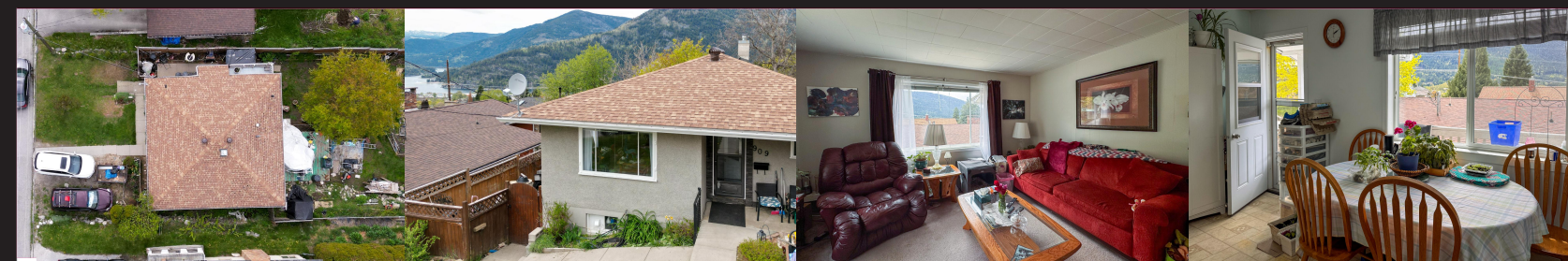
909 Innes Street

---



Karen Bennett  
Bennett Family Real Estate

[karen@nelsonproperty.com](mailto:karen@nelsonproperty.com)

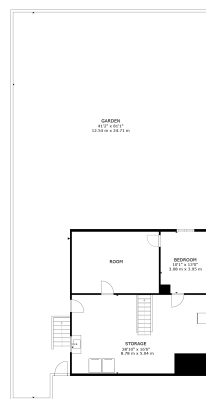


Karen Bennett  
Bennett Family Real Estate



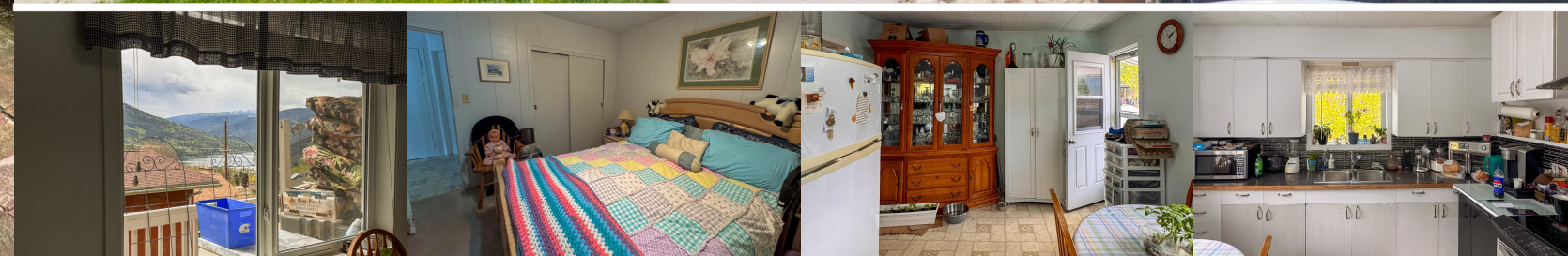
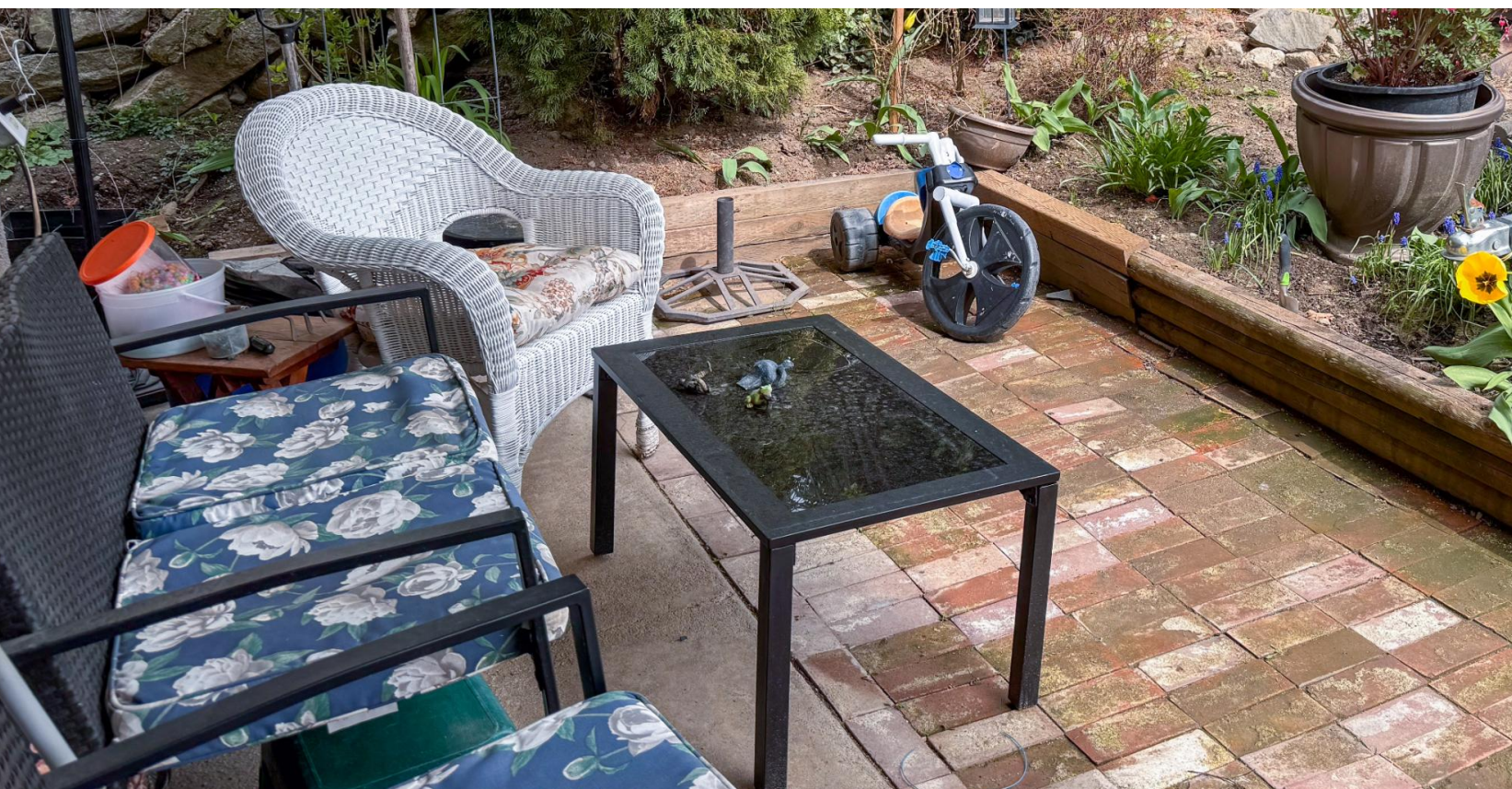
FLOOR 1

GROSS INTERNAL AREA  
 BASEMENT AREA: 1,127 sq. ft. (30.2m<sup>2</sup>)  
 TOTAL: 1,127 sq. ft. (30.2m<sup>2</sup>)  
 EXCLUDED AREA: 1,127 sq. ft. (30.2m<sup>2</sup>)  
 EXCLUDED AREA: 1,127 sq. ft. (30.2m<sup>2</sup>)



BASEMENT

GROSS INTERNAL AREA  
 BASEMENT AREA: 1,127 sq. ft. (30.2m<sup>2</sup>)  
 TOTAL: 1,127 sq. ft. (30.2m<sup>2</sup>)  
 EXCLUDED AREA: 1,127 sq. ft. (30.2m<sup>2</sup>)  
 EXCLUDED AREA: 1,127 sq. ft. (30.2m<sup>2</sup>)



### 909 Innes Street

Charming 1960s bungalow nestled in Nelson's Uphill neighbourhood, boasting three cozy bedrooms and one bathroom. This compact gem utilizes space efficiently, offering a large eat-in kitchen, living room and two bedrooms on the main floor. Enjoy lake views from the kitchen and deck. There is ample storage in the basement, as well as laundry, a third bedroom and an additional room. Step outside to discover a spacious backyard with room for gardening and outdoor activities. Convenient location, close to the Rail Trail and lots of potential, this could be the home you have been waiting for!

Area	Nelson	Age	1963
Bedrooms	3	Taxes	3154
Bathrooms	1	Tax Year	2023
Lot Size	0.13	MLS#	2476627
Floor Space	1226	Parking	

Karen Bennett  
 Bennett Family Real Estate

To view interactive floor plans scan this QR code with your smart phone



karen@nelsonproperty.com

