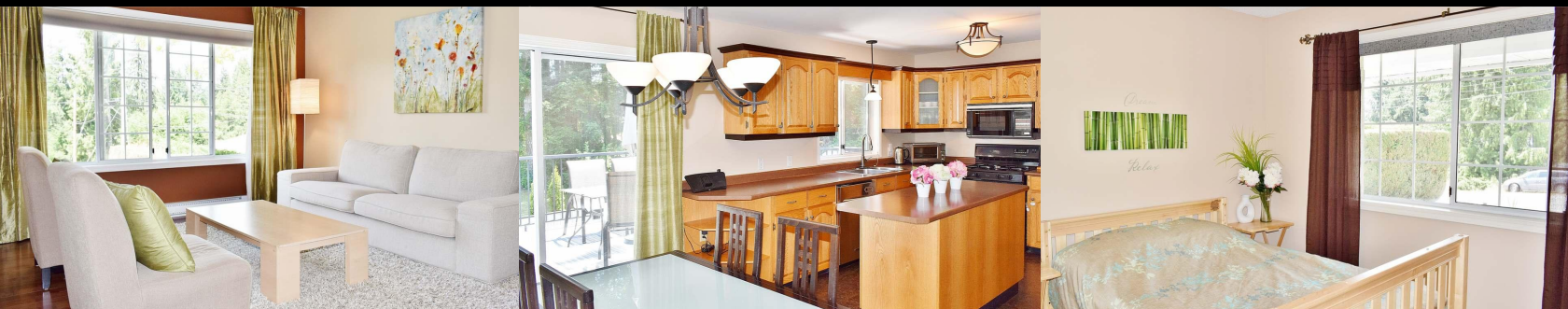




2843 Meadowview Road

\$574,500



Shawnigan Beach Estates Family Home

Located in popular Shawnigan Beach Estates, this classic colonial styled 2 level, 5 bedroom (1 currently used as a home office), 2 bathroom, 2,416 sq.ft. family homes shows pride of ownership and awaits your family. Recent updates to this well cared for home include new bathrooms & laundry room, paint, trim, flooring & fixtures. There's also a propane gas cook stove and fireplace, hardwood floors, big utility room and grand foyer. Ideal for outdoor enjoyment with an easy care fenced back yard, covered area off the rec room & big BBQ deck off the kitchen plus a great location for recreation with Shawnigan Hills Athletic Park, trails and the lake all within walking distance. Shawnigan Lake Boarding School, Discovery Elementary, Shawnigan Village and highway access for Victoria bound commuters all just minutes away too! Don't wait to view this value packed offering!

SPECS & FEATURES

Area	Z3 Shawnigan	Age	1989
Bedrooms	5	Taxes	\$3,468
Bathrooms	2	Tax Year	2018
Lot Size	0.2 Acre	MLS#	442999
Floor Space	2,416 Sq. Ft.	Parking	Carport - Single



To view interactive floor plans scan this QR code with your smart phone

Johannsen Group

RE/MAX of Duncan

Each office is independently owned and operated

(250) 748-8080 or (250) 743-5151

Toll Free: 1-888-748-8088

mail@kimjohannsen.com

<http://www.kimjohannsen.com>

