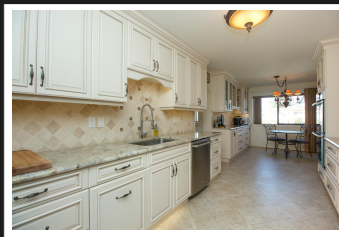


PEMBERTON
HOLMES

· ESTABLISHED 1887 ·

5-9925 THIRD ST



Stonetide Manor, an exclusive enclave of 5 waterfront units in the Heart of Sidney By the Sea. This updated Seaside Penthouse will please even the most discerning buyer. This is a very well-planned renovated layout. Custom cabinetry & stunning glass accents compliment the built in's in your gourmet kitchen that offer plenty of work space, granite countertops, dual ovens, warming oven & gas cooktop. Heated tile floors throughout the home complement warm plush carpeting & custom draperies. Spacious master w/private deck & spa inspired ensuite. 2nd BR connects to a full bath, 3rd BR/office with custom built in desks. The perfect retreat that offers some of the best views of Haro Straight, the Islands, Mt Baker & beyond. Walk out of your complex onto the Sidney waterfront walk way, literally steps to all the shops & amenities living in downtown Sidney offers. Unique to the complex is each units detached double car garage

Priced at
\$1,450,000

Area	Sidney North-	Age	1985
Bedrooms	East	Taxes	5357
Bathrooms	3	Tax Year	2019
Lot Size	3	MLS#	415510
Floor Space	0.08	Parking	2 Spaces
	2455		



ANN WATLEY

Pemberton Holmes - Sidney

Scan this QR
Code with your
smart phone



(250) 656-3486
ann@annwatley.com
<http://www.annwatley.com>

107 - 2360 Beacon Ave
Sidney, V8L 1X3