

2700 Dorset Rd

2700 Dorset Rd
\$1,835,000



SPACIOUS UPLANDS HOME

Very spacious family home offering a versatile floor plan that could accommodate a large or multi-generational family. Situated in the prestigious Uplands area of Oak Bay, steps to Uplands Park and beach. The main floor offers mostly one level living and 2,422 square feet with 3 bedrooms, 2 full baths, den and media room. The bright large kitchen has an abundance of cabinetry, counter tops and sky lights. The layout is perfect for entertaining with large principal rooms and a beautiful tiered deck off the kitchen, and a large dining room adjacent to the kitchen that flows to the formal living room. The lower level offers 2 more bedrooms, a full bath, and family room (Currently being used as a gym) There is a separate workshop, lot of storage and laundry. Easily suited or room for further development. The rear yard is very private and surrounded with a Laurel hedge that offers mature landscaping, a cherry and apple tree. Access to the attached garage and parking is off Devon Rd.

SPECS AND FEATURES

Area	Oak Bay	Age	1957
Bedrooms	5	Taxes	6532
Bathrooms	3	Tax Year	2017
Lot Size	10300	MLS#	389069
Floor Space	3880	Parking	5 Spaces, Tanedem Garage, Driveway Parking



To view interactive floor plans scan this QR code with your smart phone



Robyn Hamilton

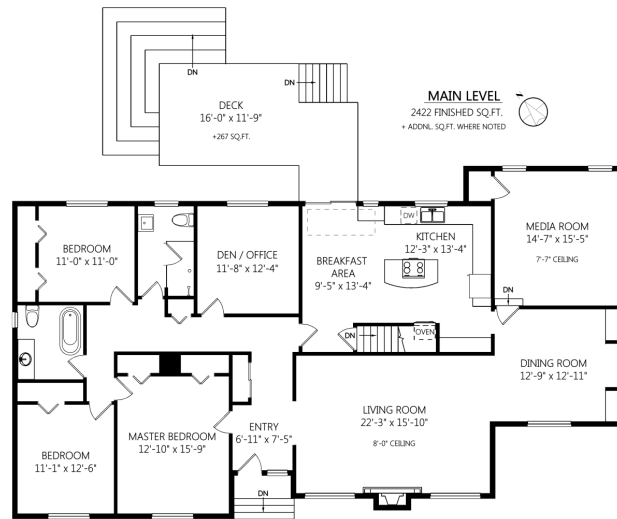
Pemberton Holmes - Cloverdale
Each office is independently owned and operated

(250) 384-8124

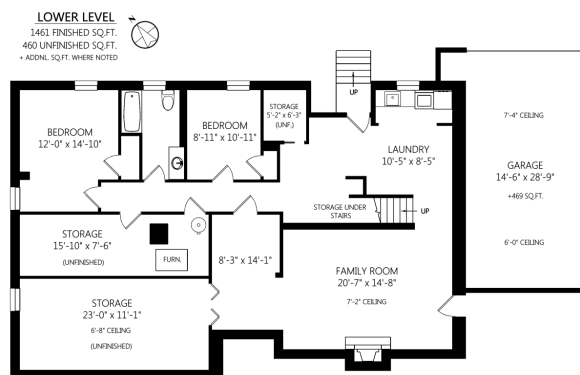
150 - 805 Cloverdale Ave
robynhamilton@shaw.ca
<http://www.RobynHamilton.com>

2700 Dorset Rd

2700 Dorset Rd
\$1,835,000



Situate within a short stroll to Uplands Park, Estevan Village, Willows Beach and many other amenities.



Robyn Hamilton
Pemberton Holmes - Cloverdale
Each office is independently owned and operated

(250) 384-8124
150 - 805 Cloverdale Ave
robynhamilton@shaw.ca
<http://www.RobynHamilton.com>