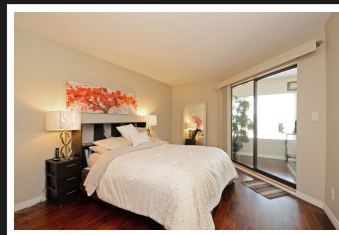
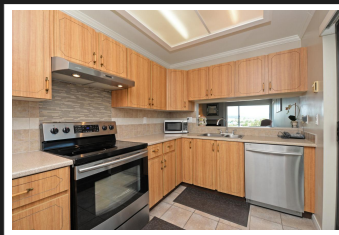
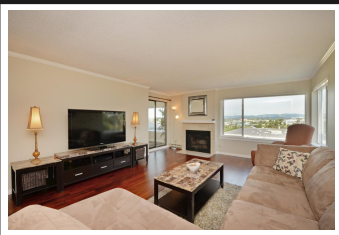


PEMBERTON
HOLMES

· ESTABLISHED 1887 ·

GORGEOUS SPACIOUS CONDO

308-3260 Quadra St



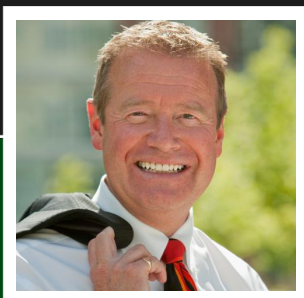
BEDROOMS 2, BATHROOMS 2

#308 - 3260 Quadra St Gorgeous, spacious 2 bdrm, 2 bthrm sub-penthouse on the quiet side. The sunsets are amazing from this tastefully renovated corner suite with 2 enclosed balconies, in suite laundry & parking. Sorry, Bylaws preclude rentals and pets. But nice 55+ adults are welcome! This is an exciting suite to come home to!

Priced at
\$399,900

Area	Quadra
Bedrooms	2
Bathrooms	2
Lot Size	0.03
Floor Space	1177

Age	1981
Taxes	1461
Tax Year	2018
MLS#	395455
Parking	1 Space



RICK COUVELIER

Pemberton Holmes - Cloverdale

Scan this QR
Code with your
smart phone



(250) 384-8124
rick@couvelier.com
<http://www.couvelier.com>

150 - 805 Cloverdale Ave
Victoria, V8X 2S9