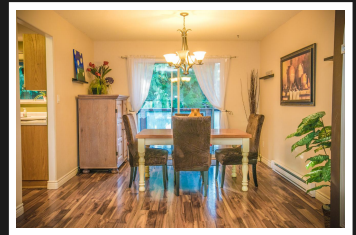
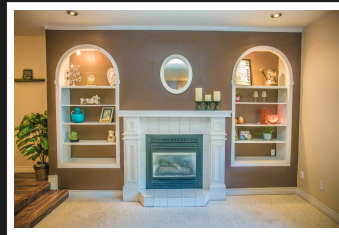
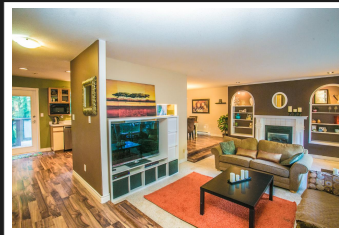
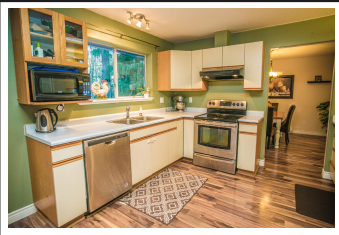


PEMBERTON
HOLMES

· ESTABLISHED 1887 ·



2236 McIntosh Road

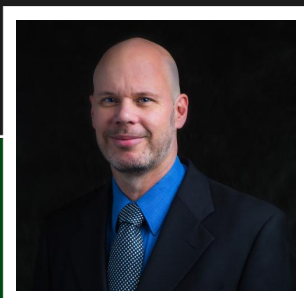


2236 McIntosh Road

Shawnigan Lake Beach Estates. This 4-5-bedroom family home on .28 of an acre, backs onto greenspace for added peace and quiet. With two natural gas fireplaces, open concept main floor and sunken living room, large family room, and lots of space for family and projects, this really is a sweet home. There is potential for an in-law suite in basement w/ separate entrance. With newer flooring, new dishwasher and hot water heater, recent basement renovation with two bedrooms, new bathroom, and many more upgrades, this home is turn-key. The spacious back yard features a gravel fire pit area, apple trees, plenty of RV/boat parking, and is fully fenced. Perfect location close to mountain biking and hiking with trailheads seconds away, which lead to Kinsol Trestle, the Quarry, and Cobble Hill Mountain. Minutes from the lake, boat launch, picturesque Shawnigan Village (cafe, restaurants, friendly neighbors), and a reasonable commute to Victoria.

Priced at
\$569,000

Area	Z3 Shawnigan	Age	1989
Bedrooms	5	Taxes	3811
Bathrooms	3	Tax Year	2019
Lot Size	0.28	MLS#	464367
Floor Space	1996	Parking	Garage - Single



PAUL TEDRICK

Pemberton Holmes - Duncan

Scan this QR
Code with your
smart phone



250-216-6020
paul@paultedrick.ca
www.paultedrick.ca

23 Queens Road
Duncan, V9L 2W1