

101-1083 Tillicum Road

New Price!
\$484,900



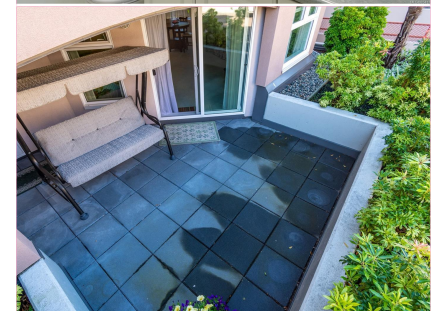
Your Cozy Indoor Retreat

Ground floor - wheelchair accessible! This end unit with a large patio has all the features you are looking for - 2 large bedrooms and 2 baths, separate in-suite laundry room and plenty of storage. With a large soaker tub in the ensuite and a cozy gas fireplace in the open plan living/ dining area, you will enjoy your new lifestyle in this spacious suite, away from traffic noise. The Gorge Pointe gated complex is fully remediated with a new roof. Amenities include secure underground parking, a guest suite, kayak and bike room, library, gym and a workshop. There is a private marina in the complex for deep water boat moorage or launch your kayak or paddle board. Take a stroll along the Gorge causeway, stop to shop or have lunch on the way back. A great community located only a 10 minute drive from downtown Victoria. Your pet and BBQ are permitted. Come and lounge on the dock and greet your friendly new neighbours!



Features

Area	Kinsmen Park	Age	1993
Bedrooms	2	Taxes	\$2,623
Bathrooms	2	Tax Year	2019
Lot Size	1,352	MLS#	854172
Floor Space	1,148	Parking	1 space



Debby Harris

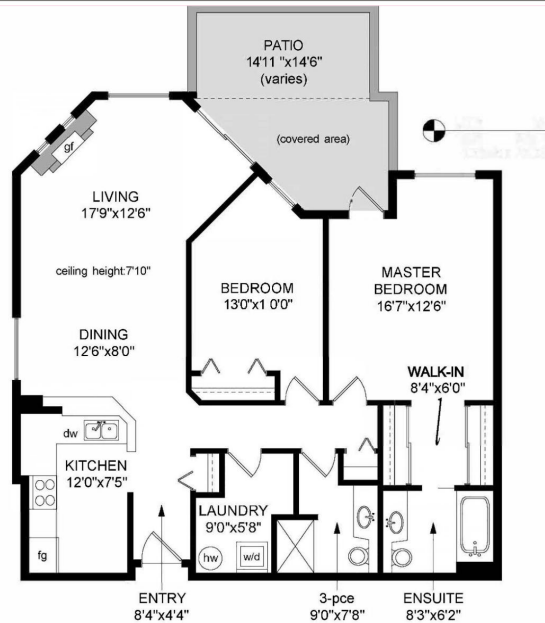
Pemberton Holmes - Cloverdale

250-920-8277

1debby.harris@gmail.com
debbyharris.ca

101-1083 Tillicum Road

Easy Living on the Gorge
Fully remediated - New Roof 2020



Your Waterfront Lifestyle Awaits!

Bring your boat and live on a beautiful waterway that leads to Victoria's Inner Harbour and beyond to the Pacific Ocean. The serenity of the water is yours to explore - by kayak - by paddle board - take the plunge and go for a swim or just lounge on the dock - all this - just a 10 minute drive to downtown Victoria. What are you waiting for? Time to enjoy!



Debby Harris
Pemberton Holmes - Cloverdale

(250) 920-8277

1 debby.harris@gmail.com
debbyharris.ca