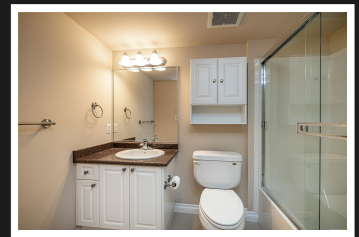
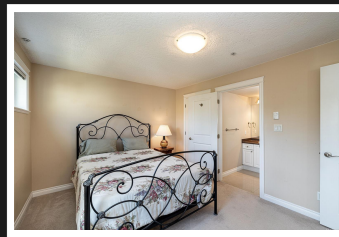


PEMBERTON  
HOLMES

· ESTABLISHED 1887 ·

## 211-4536 VIEWMONT AVE



This 2 bedroom 2 bath Condo, built in 2008, is just under 900 sq. ft. and centrally located to downtown Victoria, Sidney, Airport and Ferries. You will appreciate the easy access to the Royal Oak Shopping Centre and the short walk to Broadmead Shopping Centre - plus walking distance to the Restaurant of your choice! There are so many great features of this bright home: heated tile flooring in entrance and kitchen, 4 kitchen appliances plus garburator, in unit laundry, large walk-in Closet and 3 piece ensuite in the master bedroom, an additional 4 piece bath conveniently located near the second bedroom, balcony off living/dining areas, underground parking plus you have your storage locker on the same floor. This is a 55+ smoke free building with underground secured parking and lots of visitor parking.....so much for a great price of only \$415,900

**Priced at**  
**\$415,900**

Area	Royal Oak	Age	2008
Bedrooms	2	Taxes	2021
Bathrooms	2	Tax Year	2019
Lot Size	882	MLS#	852020
Floor Space	883	Parking	Underground



**INEZ LOUDEN, FRI**

Pemberton Holmes - Sidney

Scan this QR  
Code with your  
smart phone



(250) 656-3486  
inezlouden@telus.net  
<http://www.inezlouden.com>

107 - 2360 Beacon Ave  
Sidney, V8L 1X3