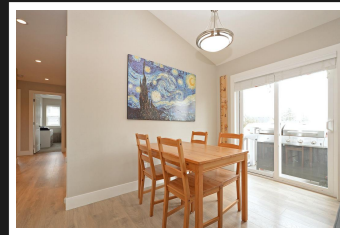


PEMBERTON
HOLMES

· ESTABLISHED 1887 ·

ONE OF A KIND HOME

6954 WRIGHT ROAD

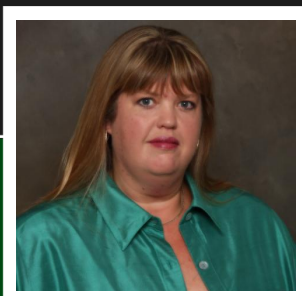


6954 Wright Road

Perfectly Designed & Beautifully Finished every detail considered in building this One of a Kind Home! In Whiffin Spit neighborhood this home is steps to a Beach with Ocean Views. Bright and Full of Light the open concept kitchen, living, dining is the perfect space to have family time or entertain. This living space opens onto a huge 24x10 deck bringing the outside in. A well thought out Private Legal 2 bed self contained suite with its own yard helps pay your mortgage with happy tenants. Some of the extras include 2 hot water tanks, separate meters, safe and sound insulation and resilient channel sound proofing, parking for your Toys Boys... RV or Boat! Extra Storage crawl for main 4-5 feet, suite has 3 and 2 separate fenced backyards!!!

Priced at
\$539,900

Area	Whiffin Spit	Age	2015
Bedrooms	5	Taxes	3235
Bathrooms	3	Tax Year	2016
Lot Size	0.09	MLS#	375474
Floor Space	2183	Parking	Garage



STACEY SCHARF
PEMBERTON HOLMES - SOOKE

Scan this QR
Code with your
smart phone



(250)889-5994
sascharf@shaw.ca
www.staceyscharf.com

2 - 6716 West Coast Rd
Sooke, V9Z 0P7