

# WELCOME TO: 1005-83 SAGHALIE ROAD

# \$ 399,900

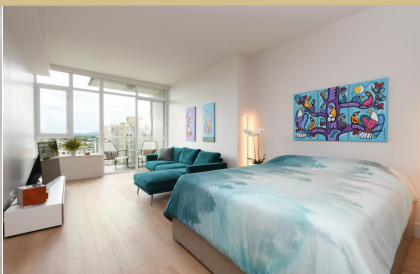
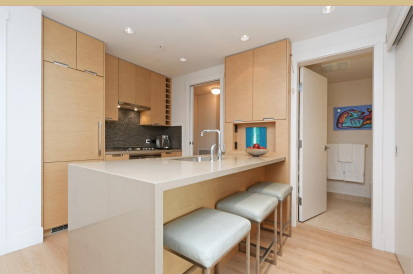
VICTORIA WEST



Area	Songhees
Style	Bachelor
Bathrooms	1
Patio	5x6
Floor Space	491
Built in	2014
Taxes	\$1,785
Tax Year	2018
MLS#	411317
Parking	1 Space, secured
Strata Fee	\$208.58



To view interactive floor plans scan this QR code with your smart phone



## 1005-83 SAGHALIE ROAD

Enjoy the sunsets in this fantastic studio condo with floor to ceiling windows overlooking green space and the Sooke Hills. This exceptional steel and concrete building, The Promontory, built by Bosa, has many amenities, including concierge and gym. European-style layout maximizes space. Over height ceilings provide a spacious feel. Kitchen features a full premium appliance package including gas cooktop. Lots of cabinet space with peninsula and breakfast bar. Spa inspired spacious bath with soaker tub. Includes heat pump for efficient heating and cooling, custom storage bed, underground secure parking stall, and storage locker. Balcony to enjoy evening BBQ's provides city and distant water views. Excellent location, a short walk or bus downtown and minutes away from shopping and restaurants. Rentals permitted and cats and dogs welcome.

## TRACY MENZIES

PEMBERTON HOLMES - OAK BAY

Each office is independently owned and operated

P: (250) 419-2075

2000 Oak Bay Ave  
menzies.tracy@gmail.com  
<http://www.tracymenzies.com>

