



Quiet. Natural light. Greenery. Spaciousness.

This 1200 square foot home with two bedrooms and a den overlooks the Gorge Vale Golf course on the quiet side of the building. Light from the southeast flows through a bank of windows into the open concept living/dining/kitchen areas. High ceilings increase the sense of space. The primary bedroom includes a large walk-through closet plus private 4pc ensuite with soaker tub and walk-in shower. A large covered balcony, perfect for summer lounging & BBQs, opens off the living area. The Ironwood complex has a guest suite, secure underground parking, kayak and bike storage, a healthy contingency fund, reasonable strata fees and is centrally located near the Gorge Waterway with easy access to town via bike, car or bus. Newer washer/dryer in suite. One dog or cat, no size restrictions.



203D-1115 Craigflower Rd

Esquimalt BC V9A 7R1

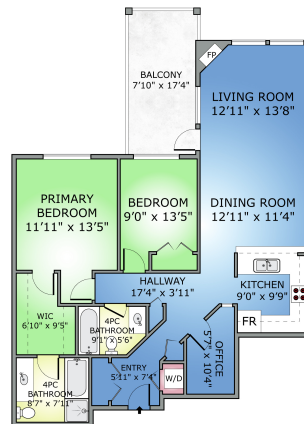


FEATURES

Area Gorge Vale
Bedrooms 2
Bathrooms 2
Lot Size 1196
Floor Space 1204

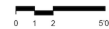


#203D - 1115 CRAIGFLOWER RD



SINGLE LEVEL
1204 SQ.FT.
 CEILING HEIGHT: 8'10"

HOUSE	FINISHED	OTHER AREAS
SINGLE LEVEL	1204	BALCONY 154
TOTAL	1204	



DOCUMENT PREPARED FOR THE EXCLUSIVE USE OF
ANDREW PLANK
 RESHOT.CA
 MEASURED 23/09/2024
 Email: info@reshot.ca



Property details are reliable, though their accuracy isn't guaranteed. Purchasers should confirm measurements if needed.



I'M HERE TO HELP

ANDREW PLANK REALTOR®

C (250) 360-6106 info@andrewplank.com

www.andrewplank.com

*Not intended to solicit buyers or sellers currently under contract.



110-4460 Chatterton Way
Victoria, BC V8X 5J2