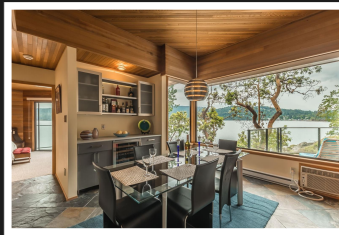


PEMBERTON
HOLMES

· ESTABLISHED 1887 ·

RARE SOUTH FACING OCEAN FRONT

360 Arbutus Ave



360 Arbutus Ave

SOUTH FACING WALK-ON OCEANFRONT IN MAPLE BAY - Stunning expansive views and privacy abound beyond the gated entry of this gorgeous home off Arbutus Point. Nestled down by the beach, this 4bd/4bth west coast inspired home boasts exceptional 180 degree views of Maple Bay and Salt Spring Island. With over 200' of waterfront, there is endless opportunity to enjoy kayaking or swimming from your own private beach. Modern stainless steel kitchen with high-end appliances opens to the dining room and expansive living room. Lush perennial and natural gardens surround the landscape and pathways throughout the property. The sprawling balconies and decks are designed around the elegant arbutus and oak trees, and a charming gazebo is perched on a rock outcrop - a perfect space to enjoy the breathtaking sunrises. This beautiful home is one-of-a-kind.



Priced at
\$2,850,000

Area	East Duncan	Age	1981
Bedrooms	4	Taxes	8837
Bathrooms	4	Tax Year	2021
Lot Size	32670	MLS#	905693
Floor Space	3773	Parking	

JASON FINLAYSON

Pemberton Holmes - Duncan

Scan this QR
Code with your
smart phone



(250) 746-8123
jowichanrealtor@gmail.com
www.jasonfinlayson.com

23 Queens Road
Duncan, V9L 2W1