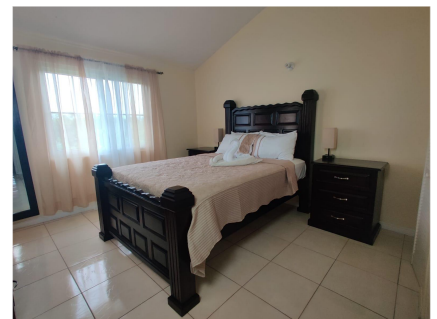


# 80 Aventura Place, Country Club 2



80 Aventura Place, Country club 2, Greater Portmore

\$US1,400

Located in the quiet 24-hr gated community of Portmore Country Club 2. This beautiful townhouse is fully furnished with a stylish decor. It features a living and dining room, two air-conditioned bedrooms with spacious built-in closets, two full bathrooms upstairs and a powder room downstairs. It has a fully equipped kitchen. There is also a wash room with a washing machine for your convenience and a generous back porch. The yard is low maintenance with two parking spaces. Country Club 2 is walking distance from Malls, PriceSmart, Ibex, restaurants and a 24-hour convenience store and gas station.



**Opal Davidson - Gessner**

(876) 204 2000  
realrockja@gmail.com  
Shop#4 Barbican Centre

KELLER WILLIAMS JAMAICA

