

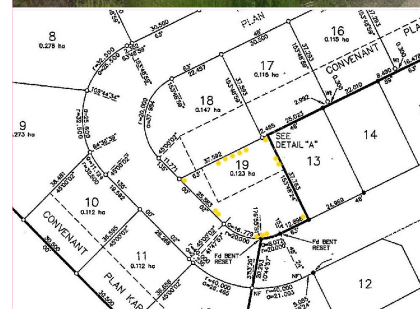
Large Corner Lot

335 Oriole Way
\$115,000



Build Your Dream Home!

Large corner lot, Great Price! One of the nicest lots in the subdivision. Bare lot located close to all amenities in the town of Barriere, only 45 minutes from Kamloops. Site is flat with underground services near the lot line, such as Water, Electrical & Telus. Simple Building scheme available. Full Basement allowable. Easy access, near golf course, lakes, fishing, cross country skiing, and various outdoor activities. Plan in effect for Septic system to allow your home and double bay garage. Call now to view and get ready to start building your Dream home.



Area	Barriere	Age	
Bedrooms	0	Taxes	503
Bathrooms	0	Tax Year	2023
Lot Size	0.3	MLS#	174443
Floor Space		Parking	



To view interactive floor plans scan this QR code with your smart phone



Kathy Campbell
RE/MAX INTEGRITY REALTY

(250) 672-1070
#2-4353 Conner Road Box 1289
kathy@barriereproperties.com
barriereproperties.com