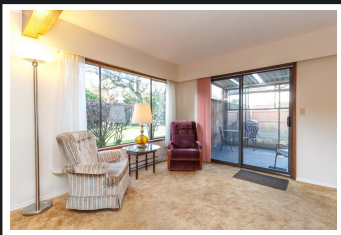


PEMBERTON  
HOLMES

· ESTABLISHED 1887 ·

# COZY TOWNHOME

9-626 Goldstream Ave



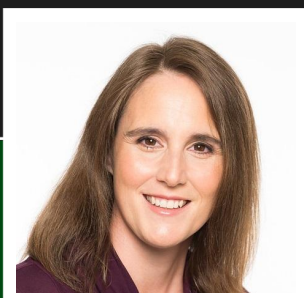
9-626 Goldstream Ave

Bring your decorating ideas. Excellent opportunity for sweat equity in this 2 Bedroom 2 Bath townhome located on the quiet side of a Family Friendly Complex walking distance to Goldstream Village. Open flexible main floor layout. Upstairs is a spacious master bedroom with walk-in closet, 4 piece bath, second bedroom plus office/den area. Private backyard with access to shared playground. Send the kids outside to play! Floorplans available

**Priced at**  
**\$340,000**

Area	Fairway
Bedrooms	2
Bathrooms	2
Lot Size	0.04
Floor Space	1206

Age	1977
Taxes	1557
Tax Year	2018
MLS#	405096
Parking	Visitors



KAT RAINSBERRY

Pemberton Holmes - Oak Bay

Scan this QR  
Code with your  
smart phone



(250) 590-8124  
rainsberry@shaw.ca

2000 Oak Bay Ave  
Victoria, V8R 1E4