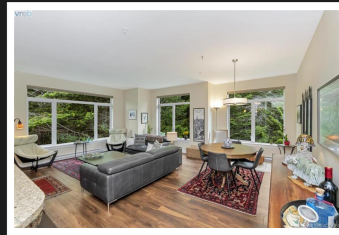
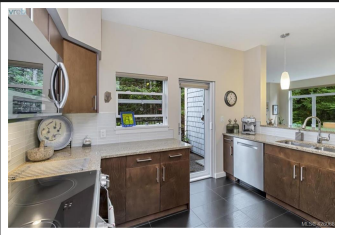


**PEMBERTON  
HOLMES**

· ESTABLISHED 1887 ·

# 303 595 LATORIA ROAD

WestShore Living at its Finest!

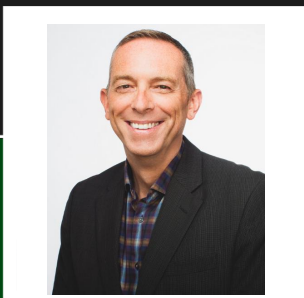


## Beautiful Bright Open Living Space with lots of Natural Light

Heron's Landing is situated in a serene natural setting, walking distance to Olympic View Golf Course, Red Barn Market, Latoria Creek Park, and just a short drive to Royal Bay Beach Park. The developer spared no expense in design or finishing details to make this one of the best condos in the area. Boasting more than 1300 square feet of bright open living space, this 2-bed, 2-bath, top-floor corner unit has 2 parking stalls and a separate 5'x10' storage locker. Features include 9' ceilings, upgraded Hunter Douglas blinds, laminate flooring in the main living areas, and heated tile floors in the kitchen and bathrooms. There are high-end stainless-steel appliances, quartz countertops, eating bar, plenty of cupboard space, and a large pantry. The main bathroom has a soaker tub and stackable washer-dryer. The master bedroom boasts a walkthrough closet complete with organizers, leading to a spacious ensuite with a large walk-in shower. Heron's Landing is a unique oasis in the West Shore!

**Priced at  
\$514,900.00**

Area	Olympic View	Age	2015
Bedrooms	2	Taxes	2395
Bathrooms	2	Tax Year	2019
Floor Space	1324	MLS#	426068
		Parking	2 Spaces



**JAMES BROWN**

Pemberton Holmes - Oak Bay

Scan this QR  
Code with your  
smart phone



(250) 590-8124  
james@findhomevictoria.com  
findhomevictoria.com

2000 Oak Bay Ave  
Victoria, V8R 1E4