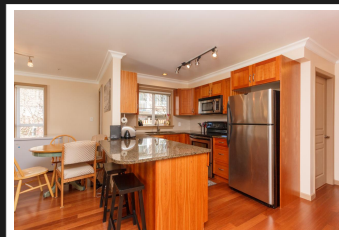
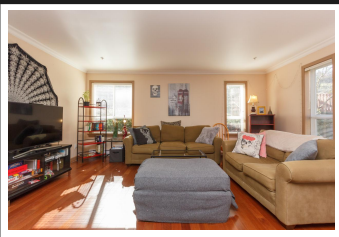


PEMBERTON
HOLMES

· ESTABLISHED 1887 ·

1514
The JULIA

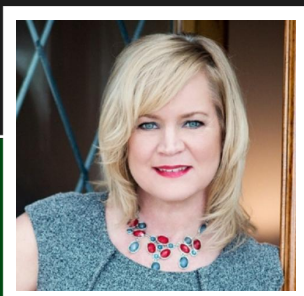
105-1514 CHURCH AVE



Welcome to the Julia, this building was well built at the time & has been kept up to "like new condition". Best of all it has a well run strata that allows 2 pets, BBQs, no age or rent restrictions, offers in-suite laundry & your strata fees even include your hot water, secure underground parking, bike lockup, storage unit & a unique rooftop garden with sunny gazebo. This 2 bedroom condo offers separation of living & 2 full bathrooms. Modern, open layout with high end finishing including granite counter tops, engineered hardwood flooring, stainless steel appliances, crown mouldings & wood cabinetry. We are sure you will appreciate the large living room, eating area & extended countertop, perfect for your pull up bar stools. Enjoy your main level, corner unit with plenty of windows that allows south sun to spill in. All this within walking distance to UVIC & Camosun you are literally steps to Shelbourne Plaza, restaurants, banking, major bus routes to all areas of Victoria.

Priced at
\$570,000

Area	Cedar Hill	Age	2007
Bedrooms	2	Taxes	2473
Bathrooms	2	Tax Year	2018
Lot Size	0.03	MLS#	405981
Floor Space	1040	Parking	Underground



ANN WATLEY

Pemberton Holmes - Sidney

Scan this QR
Code with your
smart phone



(250) 656-3486
ann@annwatley.com
<http://www.annwatley.com>

107 - 2360 Beacon Ave
Sidney, V8L 1X3