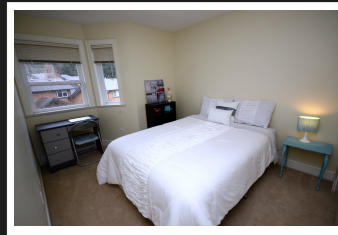


PEMBERTON
HOLMES

· ESTABLISHED 1887 ·

OCEAN & CITY VIEWS

13-486 ROYAL BAY DR



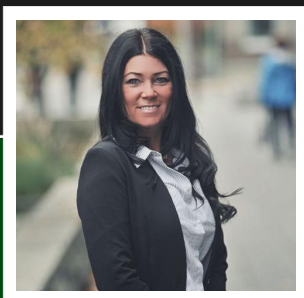
3 BEDROOMS, 3 BATHROOMS

OCEAN VIEW In Prestigious Royal Bay! This 3 level townhome is Bright and well maintained. 3 beds on detached top floor, 2 bath up and 1 on main. Master bed overlooks Mt Baker, Ocean and City views. Spacious kitchen with lots of cabinets and counter space, adjacent dining/ family room and a sunny balcony. Cozy separate living room with gas fireplace. Separate laundry and storage room and a 2 car tandem garage. Newer hot water tank, washer/dryer/ dishwasher. Ample closet & storage space. Walking distance to elem, middle and high school. Trails, woodlands, beaches and Olympic View golf course nearby. "Westridge at Royal Bay" offers a resort style environment; one you are sure to enjoy. SQFT stated as per floor plan-buyer verify if important.

Priced at
\$499,000

Area Royal Bay
Bedrooms 3
Bathrooms 3
Lot Size 0.04
Floor Space 1616

Age 2005
Taxes 2538
Tax Year 2016
MLS# 374887
Parking 1 Space,



CATHY CURTI
PEMBERTON HOLMES - CLOVERDALE

Scan this QR
Code with your
smart phone



(250) 384-8124
ccurti71@gmail.com
cathycurti.com

150 - 805 Cloverdale Ave
Victoria, V8X 2S9