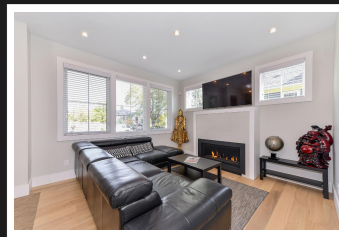
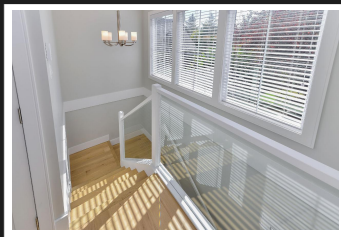
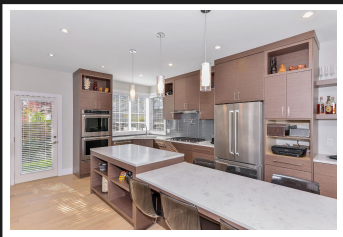


PEMBERTON
HOLMES

· ESTABLISHED 1887 ·

SOUTH OAK BAY GEM

2165 Beaverbrooke St

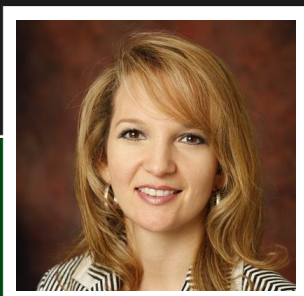


2016 Built Home is 'Like New'!

This ZEBRA Designed home was built with the upmost of care, detail, and craftsmanship. A custom-built home from the beginning, it has substantial upgrades that include: European-styled eat-in kitchen with a huge island, quartz counters, double oven, 5-burner gas range with a faucet for easy pot-filling, economical radiant heated floors throughout with hardwood floors on main and upper level, 12ft vaulted ceiling in the Master Bdr, 3rd Bdr has ensuite, modern gas FP in the living room, instant-hot water system, smart RING monitoring system, and extra-insulated theatre/rec room with high-end built-in surround sound system. The home is modern yet comfortable, bright & airy with 9ft ceilings, skylights & many windows overlooking a beautiful private easy-care yet charming sunny south-facing yard. Separate insulated/heated garage could easily be studio/hobby room. Long driveway for lots of parking. Impeccably maintained, is like-new with 8.5 years warranty remaining.

Priced at
\$1,399,999

| | | | |
|-------------|---------------|----------|--------|
| Area | South Oak Bay | Age | 2016 |
| Bedrooms | 3 | Taxes | \$4503 |
| Bathrooms | 4 | Tax Year | 2017 |
| Lot Size | 3250sf | MLS# | 394980 |
| Floor Space | 1992sf | Parking | Garage |
| | | | Single |



NICOLE BURGESS

Pemberton Holmes - Cloverdale

Scan this QR
Code with your
smart phone



(250) 384-8124
nicole@nicoleburgess.com

150 - 805 Cloverdale Ave
Victoria, V8X 2S9