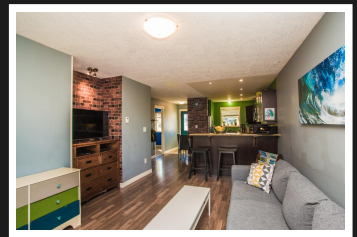
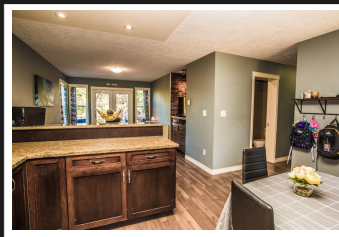
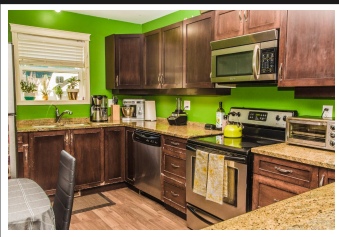


PEMBERTON
HOLMES

· ESTABLISHED 1887 ·

RANCHER WITH A VIEW!

1110 Fitzgerald Road

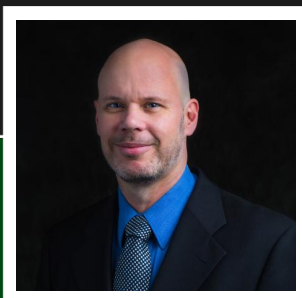


1110 Fitzgerald Road

Located in the Estates at Shawnigan Station this quality-built rancher features 2 bedroom and 2 bathrooms and a 4 piece ensuite bathroom off the master bedroom. The Modern design with open living concept and large kitchen area features quality appliances, spacious counter areas, and plenty of high-quality kitchen cabinets making this the perfect home for first time buyers or retirees alike. Enjoy the sun and spectacular views from your outdoor deck in the fully fenced backyard. The family-oriented subdivision is private and close to recreational areas and is situated in a wooded area, close to the Trans Canada Trail. Victoria is a short 25-minute drive. Measurements are approximate, buyer to verify if important to them. New home warranty in place.

Priced at
\$415,000

Area	Z3 Shawnigan	Age	2009
Bedrooms	2	Taxes	3316
Bathrooms	2	Tax Year	2018
Lot Size	0.12	MLS#	452125
Floor Space	1118	Parking	Garage - Single



PAUL TEDRICK

Pemberton Holmes - Duncan

Scan this QR
Code with your
smart phone



(250) 216-6020
paul@paultedrick.ca
www.paultedrick.ca

23 Queens Road
Duncan, V9L 2W1