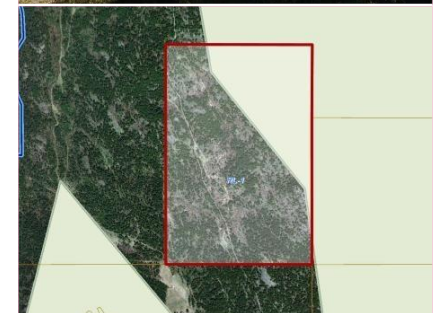
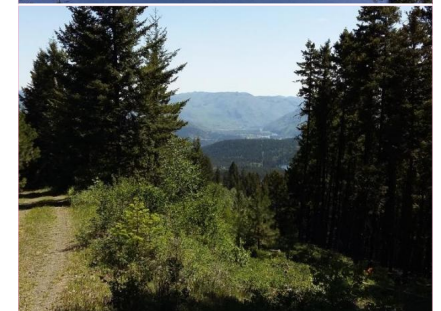


240 Acres with Panoramic Views!

240 Acres Genier Lake Road
\$960,000



Located just 15 Minutes
from Barriere Town Center!

240 Acres Situated in a unique and enchanting site bordering crown land overlooking the North Thompson River Valley . 180 degree panoramic views looking to the southwest with incredible sunsets and several choice building sites. Mixed forest with a small lake, and two streams running through the property makes this a fabulous property for someone that wants total off the grid privacy. Conveniently 15 minutes from Barriere town center, with Convenience Stores, schools and medical clinic. Ideal property for investor or a family that wants to make a change in lifestyle to the recreation land of the North Thompson Valley surrounded by lakes, provincial parks, clean air and water within 1 hour of Kamloops. All photos provided by Vendor

Area	Barriere	Age	
Bedrooms	0	Taxes	1082
Bathrooms	0	Tax Year	2023
Lot Size	240	MLS#	175286
Floor Space		Parking	



To view interactive
floor plans scan
this QR code with
your smart phone



Kathy Campbell
RE/MAX INTEGRITY REALTY

(250) 672-1070
#2-4353 Conner Road Box 1289
kathy@barriereproperties.com
barriereproperties.com