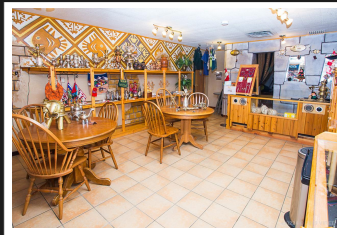


PEMBERTON
HOLMES

· ESTABLISHED 1887 ·



212 South Shore Road



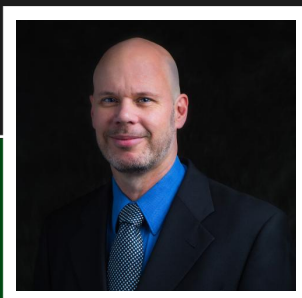
212 South Shore Road

This prime location is the first commercial property in line for westbound traffic coming from the popular Pacific Marine Circle Route. Close to the school, sports arena, ballpark and Trans-Canada Trail, providing easy access to your home based business. Zoning allows multiple uses for this storefront on the main street of beautiful Lake Cowichan. Current retail area is 450 sq. ft. but has the potential to be doubled. Attached 2 bedroom living quarters will allow you to save on overhead costs by operating your business from the comfort of your own home. Recent upgrades include kitchen cabinets with granite counter tops, brand new roof, fridge, dishwasher and baseboard heaters. There is attic space, an attached workshop with separate entrance and a fenced garden area with fruit trees and grapevine. Cowichan Lake has always been known for exciting outdoor recreation but now it is home to the Laketown Ranch hosting Sunfest and other great music events.

Priced at
\$333,000

Area	Z3 Lake Cow
Bedrooms	2
Bathrooms	2
Lot Size	.01
Floor Space	1874

Age	
Taxes	2594
Tax Year	2018
MLS#	450224
Parking	Open



PAUL TEDRICK

Pemberton Holmes - Duncan

Scan this QR
Code with your
smart phone



(250) 216-6020
paul@paultedrick.ca
www.paultedrick.ca

23 Queens Road
Duncan, V9L 2W1