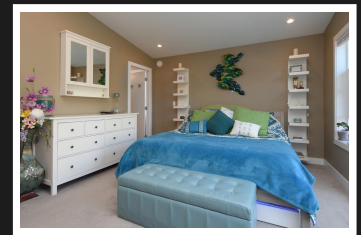
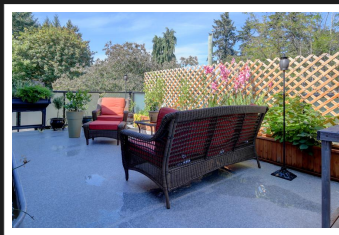
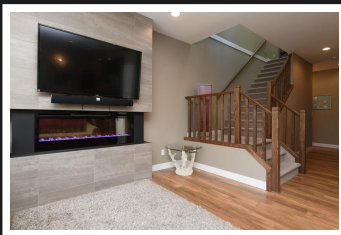


PEMBERTON  
HOLMES

· ESTABLISHED 1887 ·

## CONTEMPORARY TOWNHOME 102-1021 Springboard Place

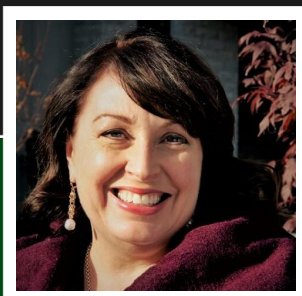


### 102-1021 Springboard Place

You'll love this bright end unit in a small, stylish contemporary complex tucked away on a quiet cul-de-sac, just mere steps away from the Florence Lake boardwalk. Three floors with unique living space on each level. Huge, over height double garage with added finished space, including loft bed & bath. Main floor has bright sunny living/dining room and gorgeous kitchen with stainless steel appliances and white quartz countertops. Dining room opens onto a good sized sundeck where you can enjoy your morning coffee. Laundry, bath & 2nd bedroom are also on the main floor. Top floor contains full, private master retreat with a walk-in closet, ensuite bath and glorious, expansive, rooftop patio oasis with a gas BBQ hookup and free-standing storage shed. Super handy location with easy access to Millstream Village, Bear Mountain, up-island & downtown. At the end of the cul-de-sac, Florence Lake offers year-round outdoor recreation including Strachan walking trails, swimming and fishing venues.

**Priced at**  
**\$525,000**

Area	Florence Lake	Age	2016
Bedrooms	3	Taxes	2342
Bathrooms	3	Tax Year	2019
Lot Size	0.04	MLS#	415195
Floor Space	1583	Parking	4 spaces



ALLISON DUCLUZEAU

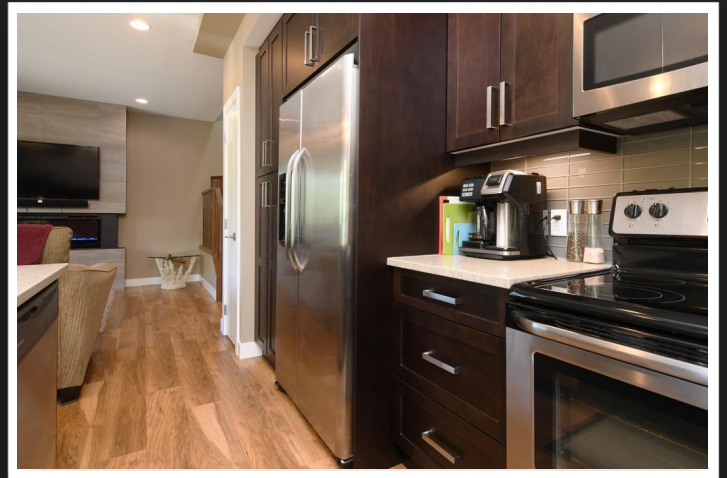
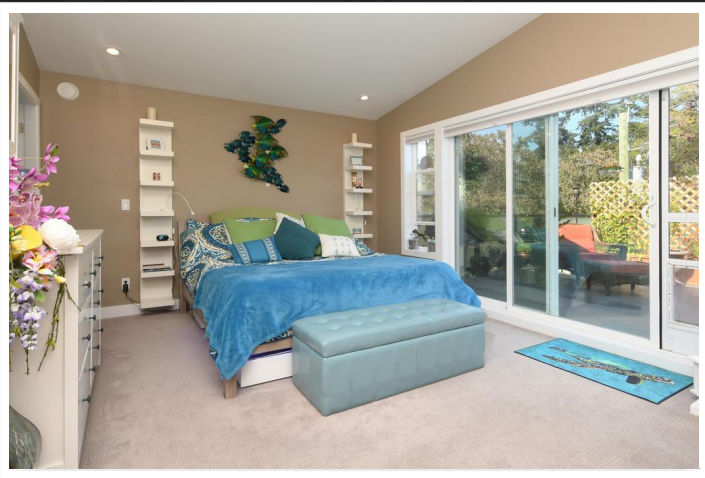
Pemberton Holmes - Cloverdale

Scan this QR  
Code with your  
smart phone



(250) 686-8656  
aducluzEAU@shaw.ca  
<http://allionducluzEAU.com>

150 - 805 Cloverdale Ave  
Victoria, V8X 2S9



## 102-1021 Springboard Place

- Live a carefree lifestyle in this immaculate Townhouse that is ideally located. Imagine being able to walk to several great restaurants & the amenities of Millstream Village.
- Walk the trails around Florence Lake with your family and pooch.
- Savour relaxing weekends in your rooftop garden oasis just off the master bedroom.
- The double car, 12'5" overheight garage is perfect for storing all your toys, kayaks, even a boat & trailer.
- Contemporary design and layout inside offer so much value for this price point. High efficiency gas heaters will keep your space cosy and your monthly costs to a minimum.
- The separate partially developed garage level offers a number of options for guests, teenagers, workshop or home based office.



**ALLISON DUCLUZEAU**

Pemberton Holmes - Cloverdale

(250) 686-8656  
 aducluzeau@shaw.ca  
<http://allisonducluzeau.com>

150 - 805 Cloverdale Ave  
 Victoria, V8X 2S9