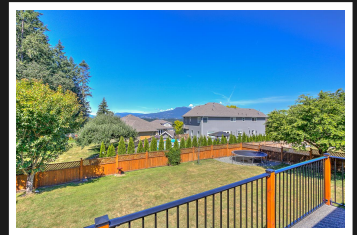
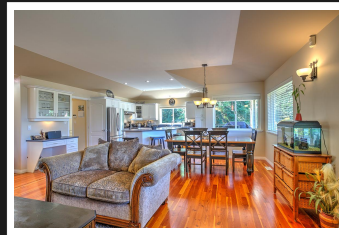
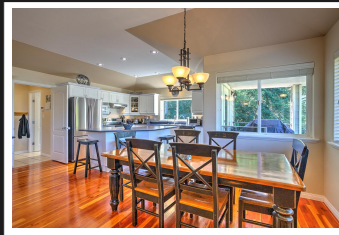


PEMBERTON
HOLMES

· ESTABLISHED 1887 ·

PERFECT FAMILY HOME

6012 Eagle Ridge Terrace

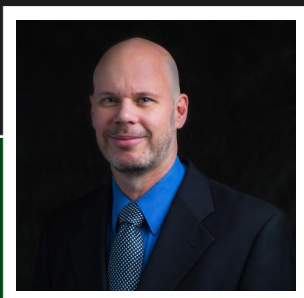


6012 Eagle Ridge Terrace

PERFECT FAMILY HOME in one of the most desirable areas of east Duncan and at the end of a very quiet cul-de-sac bordering Providence Farm. The main level entry has a good sized foyer which leads you into an open concept living/ kitchen/dining area with tapered, vaulted ceilings, fir floors and gorgeous mountain views with beautiful sunsets! The french doors off the kitchen lead you out to the exposed aggregate deck and a large fully fenced backyard. Kick back in your private gazebo bordered with trees and enjoy an evening beverage. There are 3 bedrooms on the main including a nice sized master with a shower and a big soaker tub! The master also has a large walk-in closet. Downstairs you'll find a 4th bedroom, a huge family room with tons of windows and patio doors leading to the backyard. There's also a soundproof room down offering many possible uses and top it all off with a large storage area. Add an over-sized double garage with RV parking and you're all set!

Priced at
\$669,000

Area	East Duncan	Age	1998
Bedrooms	4	Taxes	4853
Bathrooms	3	Tax Year	2019
Lot Size	0.22	MLS#	458086
Floor Space	3183	Parking	Garage - Double



PAUL TEDRICK

Pemberton Holmes - Duncan

Scan this QR
Code with your
smart phone



(250) 216-6020
paul@paultedrick.ca
www.paultedrick.ca

23 Queens Road
Duncan, V9L 2W1