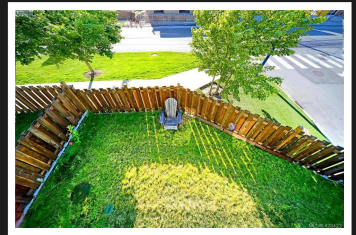
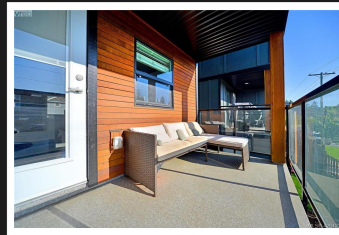
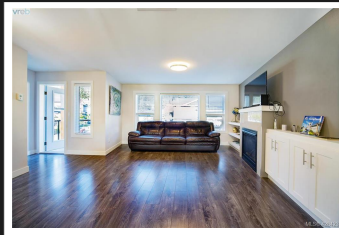
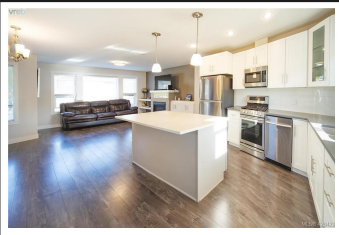


PEMBERTON  
HOLMES

· ESTABLISHED 1887 ·

# MODERN HAPPY VALLEY HOME

3342 Vision Way

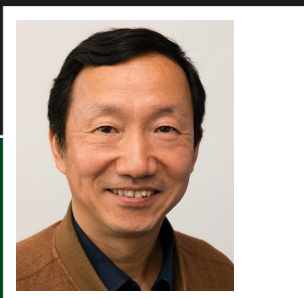


## 3342 Vision Way

This 3 bdrm + bonus room looks larger than you would expect. Built on flat ground in a quiet neighborhood. It has 3bdrm, 3 full baths, 2-Sundecks and a Single Garage. Level One bonus room has its own separate entrance, full bath & kitchenette and can be used as in-law suite or bachelor suite. A Three Story Modern Design Home Offering quartz countertops, gas fireplace, gas range, heat pump, modern kitchen cabinets with island, ceiling air valve and irrigation system. Two Sundecks - one for morning sun and one for evening sun! You also get a front yard, a backyard, and a side yard. You can transform the yards into your dream garden! Oversized windows offering an abundance of natural light. Balance of home warranty. \$14 per month Strata Fee is for the liability insurance for the common areas. Seller prefers to include the furniture in the sale.

**Priced at**  
**\$644,900**

Area	Happy Valley	Age	2018
Bedrooms	4	Taxes	2765
Bathrooms	3	Tax Year	2020
Lot Size	0.04	MLS#	428423
Floor Space	1645	Parking	3 Spaces



LUKE (YICHAO)  
CHEN  
Pemberton Holmes - Cloverdale

Scan this QR  
Code with your  
smart phone



(250) 384-8124  
agentlukechen@gmail.com  
AgentLukeChen@gmail.com

150 - 805 Cloverdale Ave  
Victoria, V8X 2S9