



# 722 Percy Pl

\$899,000 722 Percy Pl



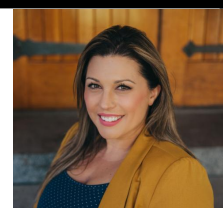
## Charming Westshore Rancher

Welcome to 722 Percy place. Perfectly nestled back on a quiet family cul-de-sac this home is exactly what you have been looking for. Perfect for first time buyers! Walking distance to all amenities the Westshore offers and easy access to the highway for commuters needing to get to the city. This immaculate rancher is ready for it's new family and offers quick possession. Charming brick lined arches gives personality and warmth to this lovely welcoming home. 3 bedrooms for the family to be close and cozy, a family room for movie nights and a living room to keep the kids happy while the adults visit. Off the kitchen opens up to an absolutely amazing outdoor living space for bbqs and built in seating for fantastic entertaining with friends and family. Huge fenced backyard for kids and pets to play, lots of storage with outdoor sheds to store your toys and plenty of driveway and off street parking. R2 zoning with possible re-

Area	1967	Age	1967
Bedrooms	3	Taxes	2610
Bathrooms	1	Tax Year	2021
Lot Size	7840.8	MLS#	899685
Floor Space	1323	Parking	



To view interactive floor plans scan this QR code with your smart phone



**Heidi Stieg**

Pemberton Holmes - Westshore

(250) 478-0779

103-814 Goldstream Ave  
 heidi@heidistieg.com  
 www.heidistieg.com



# 722 Percy Pl



**PEMBERTON  
HOLMES**

• ESTABLISHED 1887 •

722 PERCY PL						
FLOOR	FINISHED	UNFINISHED	PORCH	PATIO	SHED	TOTAL
MAIN	1323	0	113	307	101	1844
<b>TOTAL</b>	<b>1323</b>	<b>0</b>	<b>113</b>	<b>307</b>	<b>101</b>	<b>1844</b>

PLANS MAY NOT BE 100% ACCURATE, IF CRITICAL BUYER TO VERIFY.

FLOOR PLAN PREPARED FOR EXCLUSIVE USE OF

Heidi Stieg & Joanna Manning

**GO4**  
VIRTUAL.COM  
REAL ESTATE PHOTOGRAPHY

## Charming Westshore Rancher

Welcome to 722 Percy place. Perfectly nestled back on a quiet family cul-de-sac this home is exactly what you have been looking for. Perfect for first time buyers! Walking distance to all amenities the Westshore offers and easy access to the highway for commuters needing to get to the city. This immaculate rancher is ready for it's new family and offers quick possession. Charming brick lined arches gives personality and warmth to this lovely welcoming home. 3 bedrooms for the family to be close and cozy, a family room for movie nights and a living room to keep the kids happy while the adults visit. Off the kitchen opens up to an absolutely amazing outdoor living space for bbqs and built in seating for fantastic entertaining with friends and family. Huge fenced backyard for kids and pets to play, lots of storage with outdoor sheds to store your toys and plenty of driveway and off street parking. R2 zoning with possible re-development potential to explore. Call your realtor to view today!



**Heidi Stieg**

Pemberton Holmes - Westshore

(250) 478-0779

103-814 Goldstream Ave

heidi@heidistieg.com

www.heidistieg.com