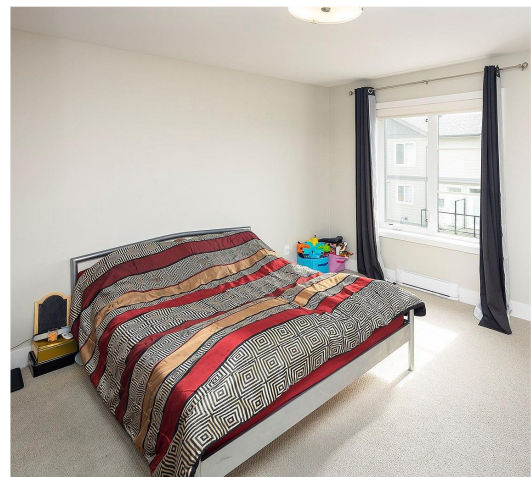




1-3440 Linwood Ave



Marc Owen-Flood

marc@owen-flood.com

Newport Realty Ltd

1144 Fort Street

Victoria, British Columbia, Canada V8V 3K8

(250) 385 2033



CHRISTIE'S
INTERNATIONAL REAL ESTATE

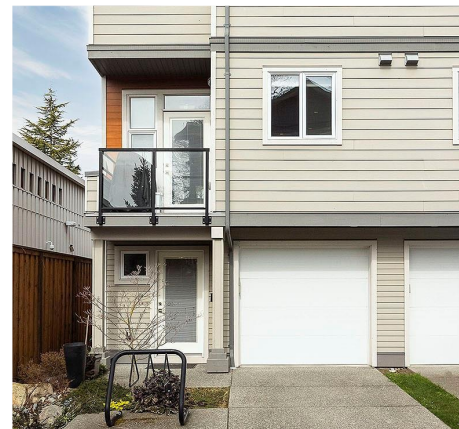
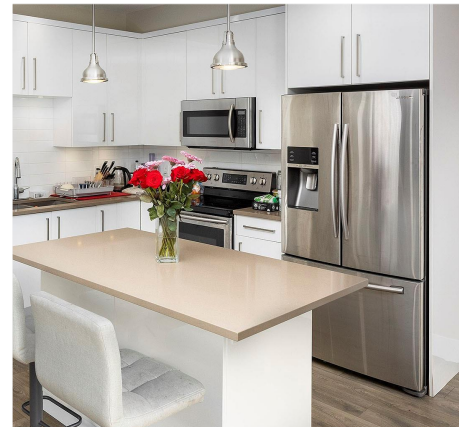
Townhome Maplewood

Rarely does a townhome in this intimate 8 unit collection come on the market. With a stylish West Coast design, this end unit offers over 1700 square feet of living space. Beautifully appointed with an abundance of natural light. The living space flows easily with clean lines, 9 foot ceilings on the main floor, kitchen with quartz countertops, large windows, generous room sizes and modern finishing throughout. The surrounding landscaping is neatly maintained and enclosed with finely finished fencing. . Each townhome has its own single car driveway and garage parking. Well- located in the popular Maplewood Area with schools, parks, the Cedar Hill Recreation Centre and Golf Course, plus the fresh farm markets of the Blenkinsop Valley nearby. Discover all this townhome and neighbourhood offer, a truly wonderful place to call home.

Art. Beauty. Provenance.

PROPERTY HIGHLIGHTS

Area	Maplewood
Bedrooms	3
Bathrooms	3
Lot Size	2,345 Sq. Ft
Floor Space	1,710 Sq. Ft
Age	2015
Taxes	\$3,505
Tax Year	2020
MLS#	870383



Marc Owen-Flood

marc@owen-flood.com

Newport Realty Ltd

1144 Fort Street

Victoria, British Columbia, Canada V8V 3K8

(250) 385 2033



CHRISTIE'S
INTERNATIONAL REAL ESTATE