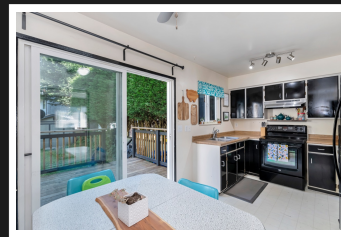
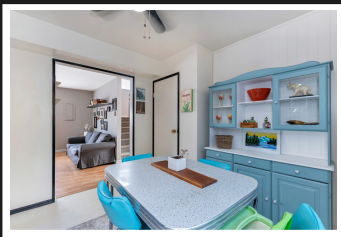


PEMBERTON  
HOLMES

· ESTABLISHED 1887 ·

# GARDENER'S OASIS

3025 Metchosin Rd



## 3025 Metchosin Rd

LOCATION LOCATION LOCATION! This home is a must see! Set back on a quite no through road you would miss it if you didn't know it was there! Walking distance to local parks, walking trails, shopping and schools. Properties in this great area rarely come to the market, and when they do they don't last long! This is the Perfect home for young families, first time home buyers or investors! Bring the family and the pets, No restrictions here and No strata fees. The exterior has been recently painted, newer roof ,vinyl windows AND an EV charger! Just move on in! The fabulous fully fenced and private back yard is a gardeners delight complete with storage shed for all of your hobbies and toys. Book your private showing today!

**Priced at**  
**\$512,900**

Area Hatley Park  
Bedrooms 3  
Bathrooms 2  
Lot Size 0.1  
Floor Space 1021

Age 1978  
Taxes 2145  
Tax Year 2019  
MLS# 427046  
Parking Driveway



HEIDI STIEG

Pemberton Holmes - Westshore

Scan this QR  
Code with your  
smart phone



(250) 478-0779  
heidi@heidistieg.com  
www.heidistieg.com

103 - 814 Goldstream Ave  
Victoria, V9B 2X7