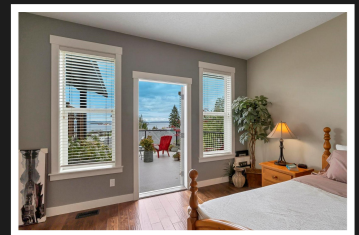
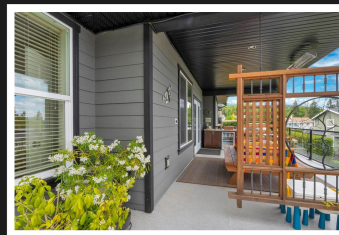
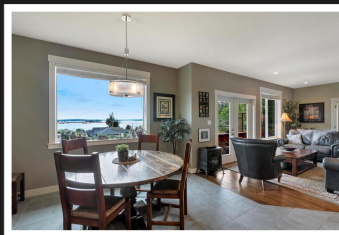


PEMBERTON  
HOLMES

· ESTABLISHED 1887 ·

# INCREDIBLE OCEAN VIEWS

1421 Adelaide St



## 1421 Adelaide St

Come home to incredible ocean views. As you enter the open concept living room, dining area and beautiful kitchen you are greeted by panoramic ocean views. Through the sliding glass doors is the huge entertainment sized deck, the ideal place to unwind after a long day. You'll find all the room you'll need in this well cared for 4 bed, 4 bath home with over 3000 finished sq ft on three levels. Ease of living is achieved with the primary bedroom located on the main level complete with walk-in closet and deluxe ensuite bath. The upper level offers two additional bedrooms, an office area and 4 pc bath. In the lower level you'll find the huge family/games room and den as well as a lovely self-contained 1 bedroom suite. This excellent family home is completed by a large double car garage and tidy mature landscaping. Come see all this lovely home has to offer for yourself.



**Priced at**  
**\$1,078,000**

Area	Crofton	Age	2011
Bedrooms	4	Taxes	6565
Bathrooms	4	Tax Year	2021
Lot Size	7029	MLS#	904561
Floor Space	3010	Parking	

**JASON FINLAYSON**

Pemberton Holmes - Duncan

Scan this QR  
Code with your  
smart phone



(250) 746-8123  
jowichanrealtor@gmail.com  
www.jasonfinlayson.com

23 Queens Road  
Duncan, V9L 2W1