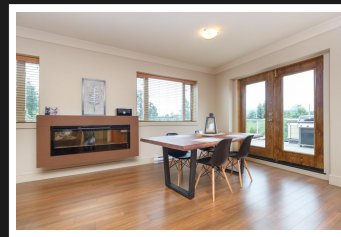
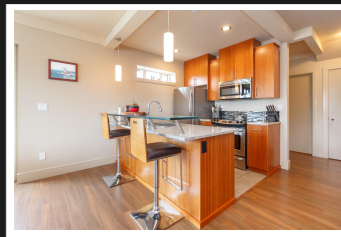
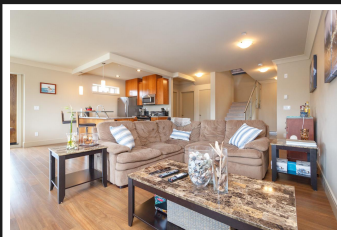


**PEMBERTON
HOLMES**

· ESTABLISHED 1887 ·

SPACIOUS AND MODERN CONDO

308-2732 Matson Rd

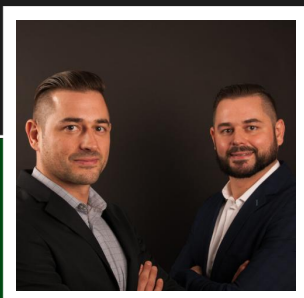


308-2732 Matson Rd

Live Large! Matson Stax is a steel and concrete building providing exceptional thermal efficiency and sound proofing. This home features a very large rooftop deck, that offers glimpses of Florence Lake, perfect for entertaining. The open great room provides many entertaining options. The modern kitchen has wood faced cabinets with granite counter tops and stainless steel appliances. This is a top floor two level end unit that has three bedrooms and three bathrooms. The 1470 sqft space makes it perfectly laid out to accommodate any growing family. Check out the 3D virtual tour

**Priced at
\$469,900**

Area	Langford	Age	2013
Bedrooms	Proper	Taxes	2218
Bathrooms	3	Tax Year	2019
Lot Size	3	MLS#	845728
Floor Space	1462	Parking	11 Spaces, Uncovered, Visitors
	1462		



AARON & DARRON HAMBLEY

Pemberton Holmes - Westshore

Scan this QR
Code with your
smart phone



(250) 478-0779
adhambley@gmail.com
<http://www.adhambley.com>

103 - 814 Goldstream Ave
Victoria, V9B 2X7