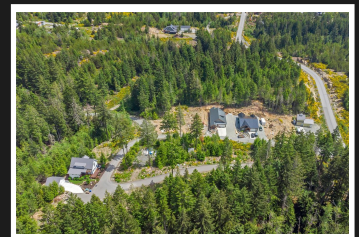


PEMBERTON
HOLMES

· ESTABLISHED 1887 ·

YOUR NEW HOME IN THE FOREST

SL3 Trailhead Cir



SL3 Trailhead Cir

Step inside this warm and inviting brand new rancher surrounded by soaring timber in Malahat Forest Estates. This home features two bedrooms plus a den/office, 2 bathrooms, a large great room, and a dining room off the spacious kitchen. With a contract secured early in the construction phase, buyers have the option to select some finishes and add an upper floor with a full suite. This home backs onto over 26 acres of forested common property with hiking trails and privacy abound. Expected construction completion Dec 2021.



Priced at
\$849,900

Area	Shawnigan	Age	2021
Bedrooms	3	Taxes	
Bathrooms	2	Tax Year	2021
Lot Size	12486	MLS#	878709
Floor Space	1606	Parking	

JASON FINLAYSON

Pemberton Holmes - Duncan

Scan this QR
Code with your
smart phone



(250) 746-8123
jowichanrealtor@gmail.com
www.jasonfinlayson.com

23 Queens Road
Duncan, V9L 2W1