

\$664,900



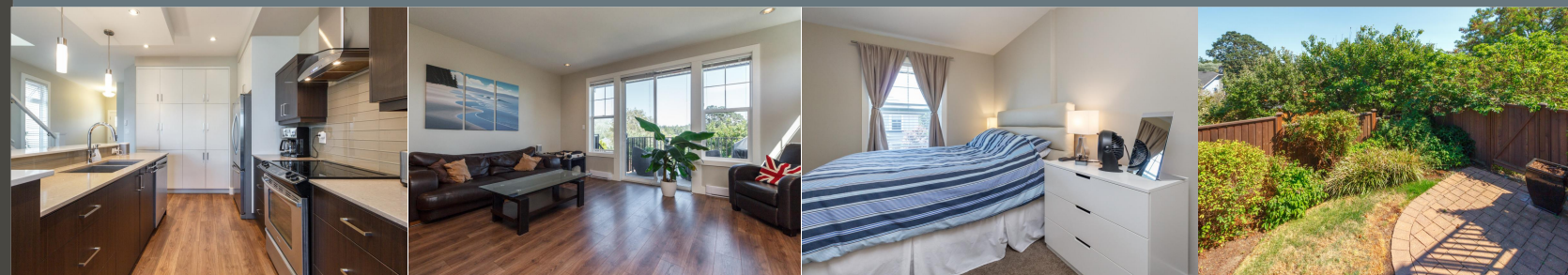
11-3903 Douglas St



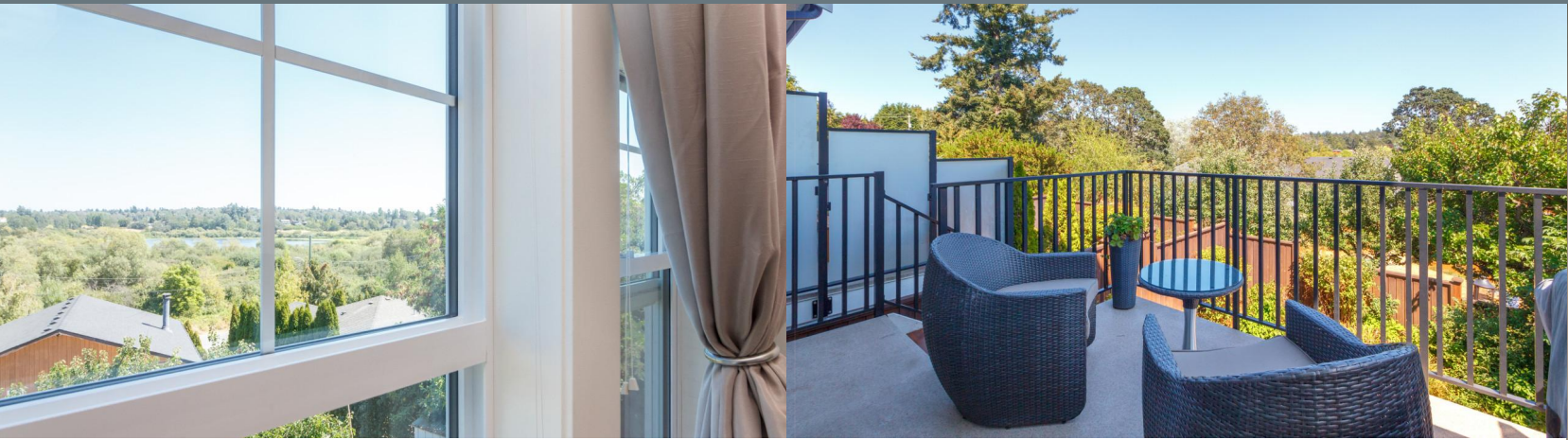
Aaron & Darron Hambley
Pemberton Holmes - Cloverdale

(250) 858-8697

150 - 805 Cloverdale Ave
adhambley@gmail.com
<http://www.adhambley.com>



Aaron & Darron Hambley
Pemberton Holmes - Cloverdale



11-3903 Douglas St

Exquisite corner townhome with wonderful views of Swan Lake! Nestled on a quiet cul de sac in the peaceful Swan Lake neighbourhood, this 3 bedroom home proudly offers two levels of modern living. On the main floor you'll find the stunning gourmet kitchen with quartz countertops, a breakfast bar and ample cabinet space. Entertain and enjoy sunny days on the deck or relax in the backyard, your own private oasis. On the upper level there are 3 bedrooms including the master with its beautiful large windows, vaulted ceilings, his and her closets and a spa like ensuite. There's also a huge crawl space with loads of room for storage, a rare and unique feature. This unit is on the quiet side of Douglas, minutes to Swan Lake and conveniently located to shopping, entertainment and restaurants.

Area	Swan Lake	Age	2013
Bedrooms	3	Taxes	3145
Bathrooms	2	Tax Year	2018
Lot Size	2370	MLS#	400409
Floor Space	1503	Parking	2 Spaces, Covered Parking Attached, Driveway, Garage Single

Aaron & Darron Hambley
Pemberton Holmes - Cloverdale



To view interactive floor plans scan this QR code with your smart phone

(250) 858-8697

150 - 805 Cloverdale Ave
adhambley@gmail.com
<http://www.adhambley.com>

