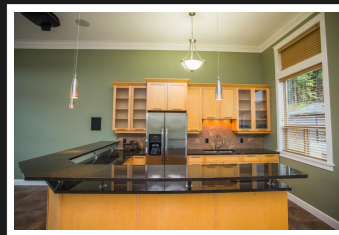
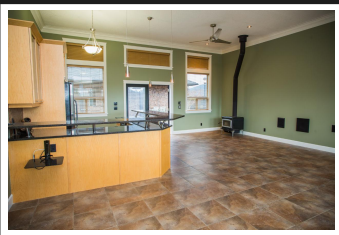


PEMBERTON
HOLMES

· ESTABLISHED 1887 ·



2820 Woodcroft Place

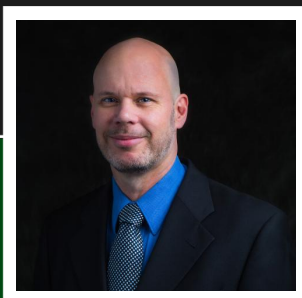


2820 Woodcroft Place

Beautiful Shawnigan Lake Rancher in the Trestle Estates w/ new home warranty on 2.55 private, usable acres with 3 bay garage and separate workshop. Two, 200-amp services make for a perfect home-based business. This well built, open concept 2-bedroom rancher w/ art studio or 3rd BR has one of the best views in the Estates. Granite countertops for the kitchen, in floor heating throughout, the living room has 14 ft. vaulted ceiling. Pacific energy wood stove for quality, supplemental heat. Plenty of additional parking, a drilled well and partially fenced property makes for quality living with exceptional recreational opportunities right out your door. Backing onto crown land, this home has so much to offer. Directions: For Google maps, enter 2868 Renfrew, then left at Timber Ridge, right at Woodcroft Pl.

Priced at
\$759,000

Area	Z3 Shawnigan	Age	2010
Bedrooms	2	Taxes	4334
Bathrooms	2	Tax Year	2018
Lot Size	2.54	MLS#	449066
Floor Space	1495	Parking	4



PAUL TEDRICK

Pemberton Holmes - Duncan

Scan this QR
Code with your
smart phone



(250) 216-6020
paul@paultedrick.ca
www.paultedrick.ca

23 Queens Road
Duncan, V9L 2W1