

**Like New Home - Copperfield Ridge**  
 NO GST- LIKE NEW HOME BACKS ON TO GREEN SPACE  
**\$618,800**  
 2788 Swanson Street, Courtenay



Location: Courtenay  
 Bedrooms: 3  
 Baths: 3  
 Ensuite: Yes  
 Floor Space: 2063 sq ft  
 Lot Size: .14 ac  
 Taxes: \$ 3426. (2019)  
 Parking: Double Garage  
 MLS No: 459945

LIKE NEW HOME IN  
 COPPERFIELD RIDGE - No GST  
 This 2063 sq.ft. home has great curb appeal and offers an open and spacious main floor with 9 foot ceilings, engineered hardwood floors, and fireplace. Design includes a very well appointed kitchen with a large eating bar and formal dining area. Off the dining room you have a covered deck for BBQ's and all your entertaining needs.

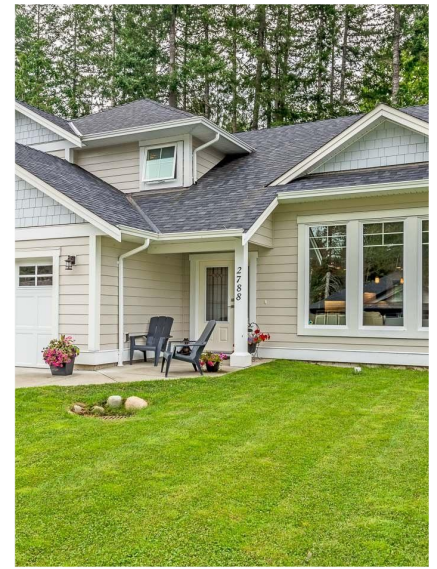


**BrianWillis.ca**  
 Personal Real Estate Corporation

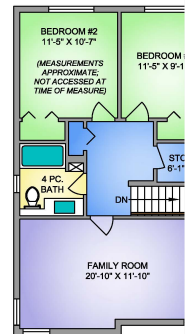
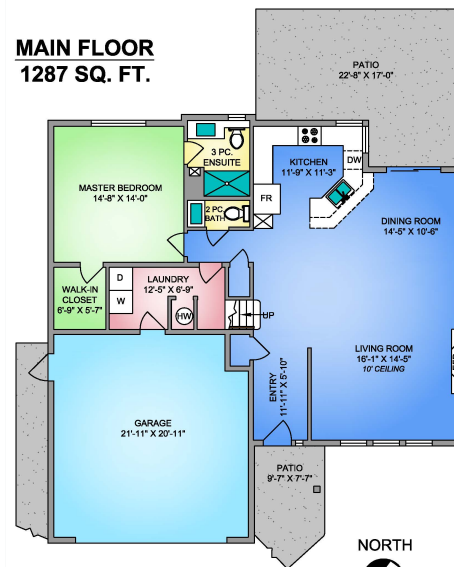
brian@brianwillis.ca  
 T: 250.334.9900 C: 250.218.6789  
 Toll Free: 1 877.216.5171  
 2230 Cliffe Ave. Courtenay, BC V9N 2L4







**MAIN FLOOR  
1287 SQ. FT.**



**UPPER FLC  
776 SQ. F**

2788 SWANSON ST.  
 AUGUST 20, 2019

Prepared by PROPER MEASURE NORTH ISLAND for the exclusive use of the client. Please note that this is a preliminary floor plan. Buyer must verify any critical measurements and/or modifications of their plans to a third party by any individual or entity other than the listing agent.

FLOOR	AREA (SQ. FT.)		GAL.
	FINISHED	UNFINISHED	
MAIN	1287	-	-
UPPER	776	-	-
TOTAL	2063	-	-



**2788 Swanson Street**

Design includes a very well appointed kitchen with a large eating bar and formal dining area. Off the dining room you have a covered deck for BBQ's and all your entertaining needs. Completing the the main floor is the spacious master bedroom complete with three piece ensuite and walk-in closet. The upper level has two more bedrooms and a third bathroom along with an over sized family room great for the kids or bonus room. You will also find an oversized walk in linen closet on this level-great extra storage that always comes in handy. Wonderful location close to all amenities.

For more information and to view contact Brian at 250-218-6789 or email [brian@brianwillis.ca](mailto:brian@brianwillis.ca).

Additional information and photo's can be viewed at [www.brianwillis.ca](http://www.brianwillis.ca)



**BrianWillis.ca**  
 Personal Real Estate Corporation

[brian@brianwillis.ca](mailto:brian@brianwillis.ca)  
 T: 250.334.9900 C: 250.218.6789  
 Toll Free: 1 877.216.5171  
 2230 Cliffe Ave. Courtenay, BC V9N 2L4

