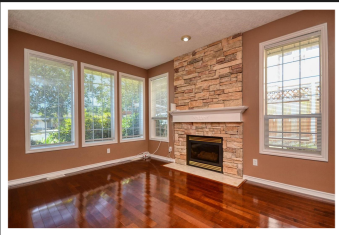


PEMBERTON
HOLMES

· ESTABLISHED 1887 ·



410 CREED RD



Be sure to view this 4 bedroom 3 bath home located in a great neighbourhood close to Victoria General Hospital, Eagle Creek Shopping Centre, Schools, Highland Pacific Golf Course, Galloping Goose Trail and Thetis Lake. The main level has 11' ceiling entrance, bedroom, 2 piece bath, laundry, living and dining area (Cherry wood flooring), kitchen with stainless steel appliances, eating area with sliders to the back deck where the children (and adults) can enjoy the large lot (approx .19 acres) with pergola and storage shed....even room for gardening and a great sports area! The upper level has the Primary bedroom, with 4 piece ensuite and walk-in closet, plus 2 other bedrooms and another 4 piece bath. Built in 1997, with a double attached garage, room for RV parking and a crawl space for extra storage. Great location in a great neighbourhood offering so many amenities at a great price of \$960,000.



Priced at
\$980,000

Area	Hospital	Age	1997
Bedrooms	4	Taxes	4249
Bathrooms	3	Tax Year	2023
Lot Size	8276	MLS#	947196
Floor Space	1692	Parking	Attached

INEZ LOUDON, FRI

Pemberton Holmes - Sidney

Scan this QR
Code with your
smart phone



(250) 656-3486
inezlouden@telus.net

107-2360 Beacon Ave
Sidney, V8L 1X3