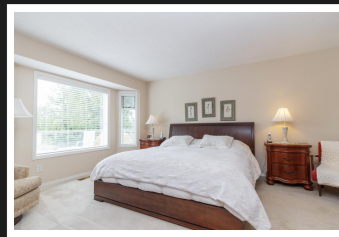
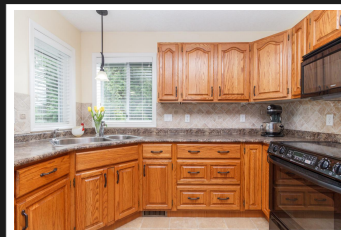
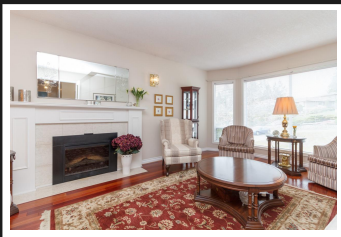


PEMBERTON
HOLMES

· ESTABLISHED 1887 ·

1780 FAIRFAX PL

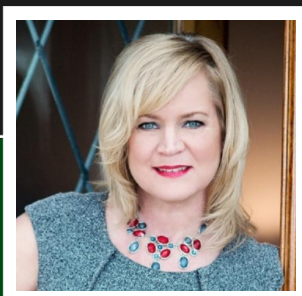


Exceptionally maintained sun-soaked property located on quiet cul-d-sac in Dean Park. This 1 owner home has 3194 sq ft of finished living space, this home offers the perfect layout with all your living on the main floor. Kitchen has a bright, sunny eating area that connects through to the family room which leads to your large sunny deck overlooking a stunningly landscaped backyard. Full height lower level with plenty of windows & an extra living area that we hope makes a great space for the next family to enjoy as much as this one has. For the family that needs it, this area could also work well for an in-law suite as downstairs has a large bedroom, fireplace, games room & a full bath. This set up is perfect as a man cave, for teenagers or to host out of town guests. Enjoy the perfect end to your long day relaxing on your upper deck taking in the sounds & beautiful features of the outdoor water fountain.

Priced at
\$949,000

Area	Dean Park
Bedrooms	4
Bathrooms	3
Lot Size	0.47
Floor Space	3194

Age	1988
Taxes	3063
Tax Year	2018
MLS#	408262
Parking	Attached



ANN WATLEY

Pemberton Holmes - Sidney

Scan this QR
Code with your
smart phone



(250) 656-3486
ann@annwatley.com
<http://www.annwatley.com>

107 - 2360 Beacon Ave
Sidney, V8L 1X3