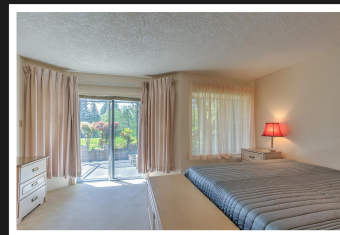


PEMBERTON
HOLMES

· ESTABLISHED 1887 ·

GOLF COURSE VIEW RANCHER

809 Country Club Drive



809 Country Club Dr

Spacious 1724 sq.ft. rancher located along the golf course in the beautiful seaside community of Arbutus Ridge. This well-maintained home offers a bright cathedral entry, two bedrooms, 2 full baths, 2 natural gas fireplaces one in the family room and one in the living room, a kitchen with an island, a large dining room, and a double car garage. All of this in a gated active adult community with 24/7 security, recreation facility, clubhouse, woodwork shop, RV/boat storage, exercise center, hot tub, outdoor pool, tennis courts, walking trails, and many activity groups. Don't miss out on this great home!



Priced at
\$799,000

Area	Cobble Hill	Age	1994
Bedrooms	2	Taxes	2988
Bathrooms	2	Tax Year	2021
Lot Size	5124	MLS#	903852
Floor Space	1724	Parking	Dbl Garage

JACKIE WOOD

Pemberton Holmes - Duncan

Scan this QR
Code with your
smart phone



(250) 746-8123
jackie@jackiewood.ca

23 Queens Road
Duncan, V9L 2W1